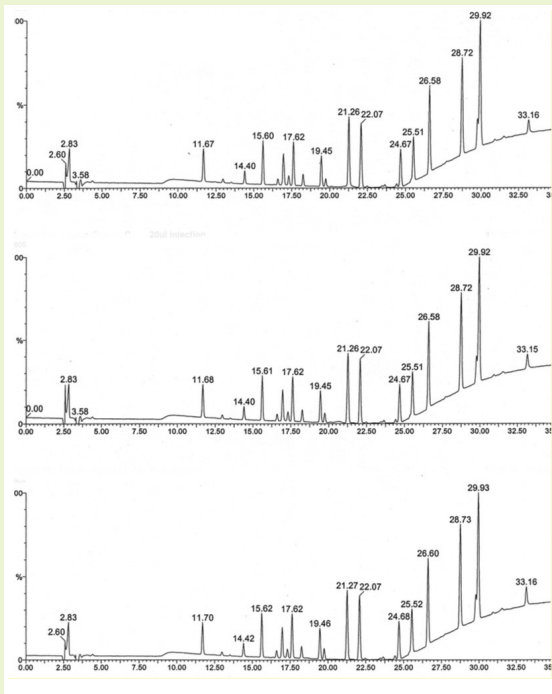


Synthetic Peptide Production

Confirmed by HPLC



Method Conditions

Column: **Cogent HPS C18™**, 5µm, 120Å

Catalog No.: 75018-25P

Dimensions: 4.6 x 250 mm

Mobile Phase: A: DI H₂O/ 0.1% TFA

B: Acetonitrile/ 0.1%TFA

Gradient:	time (min.)	%B
	0	0
	20	60
	20.1	0

Temperature: 30°C

Injection vol.: 20µL

Flow rate: 1 mL/min

Detection: UV 254nm

Sample: 3 Different samples from the same peptide batch were digested using trypsin and injected onto the HPLC column.

Discussion

An in-process method for qualifying a synthetic peptide is shown with 3 samples injected on the same column. The reproducibility from run to run on the samples is excellent giving the user a high level of confidence. The process and method was further confirmed by coupling the HPLC separation directory to Mass Spec. The mass data had a high degree of accuracy and reproducibility, verifying the peptide.

Notes: Cogent HPS C18 columns are perfectly suited for peptide analysis. The pore diameter, the exhaustive end capping and the low metal content of the silica make these columns an excellent choice for Peptide Mapping after digestion with trypsin. Unique selectivity and low cost make these columns the choice of many protein laboratories worldwide when reproducibility and reliability are mandatory.