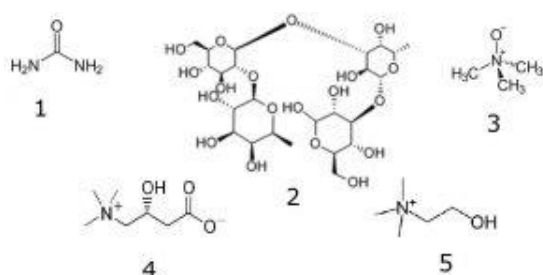
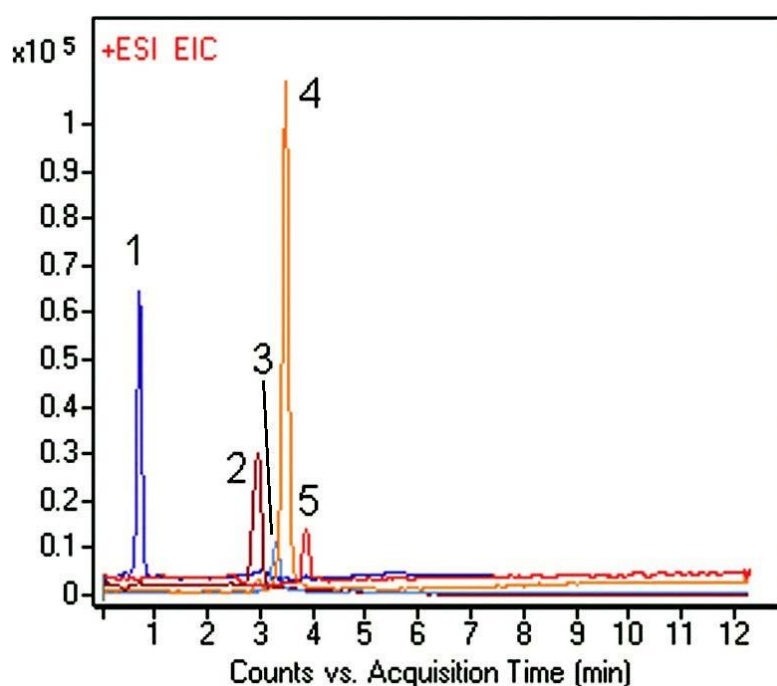


Human Plasma Extract Analyzed by LCMS - AppNote

Urea, Lactodifucotetraose, Trimethylamine, L-carnitine & Choline

Using this Method it is possible to analyze Compounds present in a Human Plasma Samples. The mechanism of retention of these polar compounds on the Column used is unknown at this time.

It is possible to Retain and Separate steroids and other Compounds based on the Shape of the Molecules.



Peaks:

1. Urea 61.0396 m/z [M + H]⁺
2. Lactodifucotetraose 635.2393 m/z [M + H]⁺
3. Trimethylamine N-oxide 76.0757 m/z [M + H]⁺
4. L-carnitine 162.1125 m/z [M + H]⁺
5. Choline 105.1148 m/z [M + H]⁺

Method Conditions

Column: Cogent UDC Cholesterol™, 4µm, 100Å

Catalog No.: [69069-05P-2](#)

Dimensions: 2.1 x 50mm

Mobile Phase:

A: DI Water / 0.1% Formic Acid (v/v)

B: Acetonitrile / 0.1% Formic Acid (v/v)

Gradient:

Time (minutes)	%B
0	90
1	90
7	20
11	20
12	90

Post Time: 3 minutes

Flow rate: 0.4 mL/minute

Detection: ESI – POS - Agilent 6210 MSD TOF Mass Spectrometer

Injection vol.: 1µL

Sample Preparation: Proprietary Lyophilized Plasma Sample was reconstituted in 60 µL 80% Acetonitrile / 20% DI Water mixture.



Attachment

No 302 Plasma Extract Analyzed by LCMS pdf 0.4 Mb [Download File](#)

Printed from the Chrom Resource Center

Copyright 2025, All Rights Apply

MicroSolv Technology Corporation

9158 Industrial Blvd. NE, Leland, NC 28451

Tel: (732) 380-8900

Fax: (910) 769-9435

Email: customers@mtc-usa.com

Website: www.mtc-usa.com