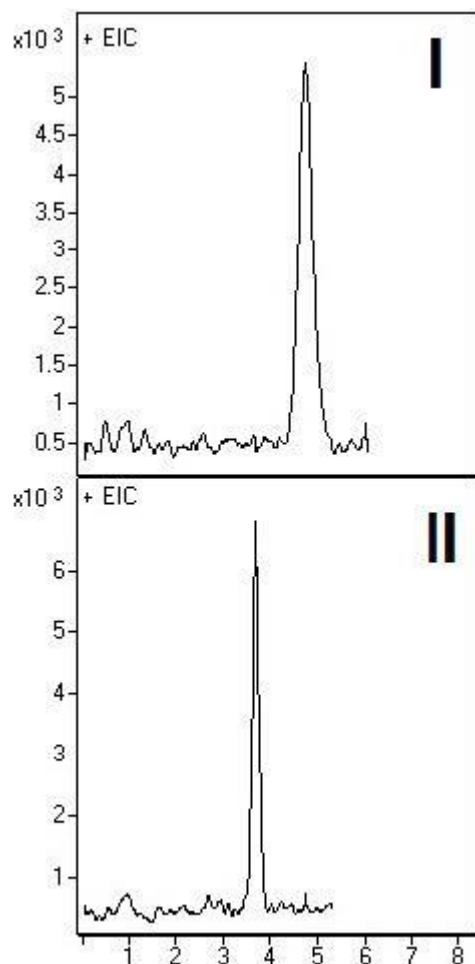


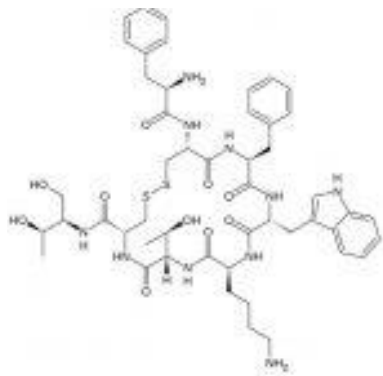
Octreotide Analyzed with LCMS - AppNote

Retained Isocratically or With a Gradient

This cyclic Octapeptide can be retained with simple Isocratic Mobile Phase conditions of 50:50 Solvent A / Solvent B (see *Figure I*). In addition, use of a Gradient produces a sharper Peak if desired (*Figure II*). Note, that the Gradient starts at an unusually high percent of Water (50%) for an Aqueous Normal Phase (ANP) application, due to the highly polar nature of the molecule.

With its two basic Amino Acid residues, the Octapeptide may lead to tailing due to silanolic interactions on some conventional Silica-based HPLC stationary phases, but here the peak shape is very symmetrical.





Peak:

Octreotide

Method Conditions:

Column: Cogent Diamond Hydride™, 4µm, 100Å

Catalog No.: [70000-15P-2](#)

Dimensions: 2.1 x 150 mm

Solvents:

A: DI Water / 0.1% Formic Acid (v/v)

B: Acetonitrile / 0.1% Formic Acid (v/v)

Figure I: 50% solvent A/ 50% solvent B

Figure II: Gradient:

Time (Minute)	%B
0	50
3	20
6	20
7	50

Injection Volume: 1µL

Flow Rate: 0.4mL / minute

Detection: ESI – POS - Agilent 6210 MSD TOF Mass Spectrometer

Sample Preparation: Reference standard solution of Octreotide

Notes: Octreotide mimics the naturally occurring hormone Somatostatin. It is used for the treatment of growth hormone producing tumors and other related medical applications.

Attachment

No 367 Octreotide Analyzed with LCMS pdf 0.1 Mb [Download File](#)

Printed from the Chrom Resource Center

Copyright 2025, All Rights Apply

MicroSolv Technology Corporation

9158 Industrial Blvd. NE, Leland, NC 28451

Tel: (732) 380-8900

Fax: (910) 769-9435

Email: customers@mtc-usa.com

Website: www.mtc-usa.com