

## Glyphosate Analyzed by LCMS - AppNote

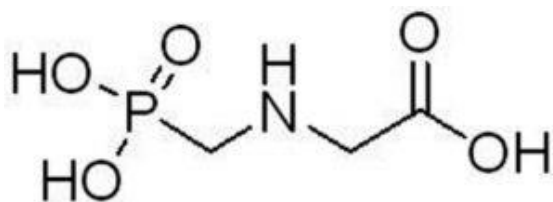
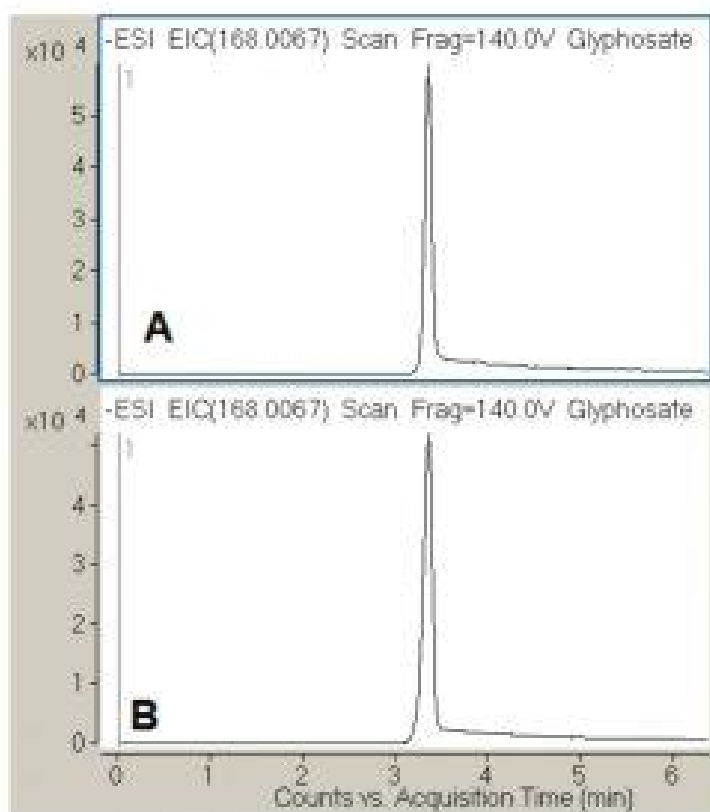
### Retention of an Extremely Polar Compound

A reliable Method for the determination of Glyphosate is presented. This Method provides very reproducible Retention and fast equilibration even when a Gradient analysis is used. The use of LCMS detection avoids time-consuming derivatization of this compound which is lacking a chromophore for UV detection. The Method shown, with ANP Retention avoids derivatization.

### Figures

A: Injection #1, RT = 3.365 minute

B: Injection #5, RT = 3.366 minute



### Peak:

Glyphosate: 168.0067 m/z (M-H)-

## Method Conditions

**Column:** Cogent Diamond Hydride™, 4µm, 100Å

**Catalog No.:** [70000-15P-2](#)

**Dimensions:** 2.1 x 150mm

**Mobile Phase:**

A: DI Water / 5mM Ammonium Acetate

B: 90% Acetonitrile / 10% DI Water / 10mM Ammonium Acetate

**Gradient:**

Time (minutes)	%B
0	80
1	80
1.1	5
5	5
6	80

**Post Time:** 5 minutes

**Flow rate:** 0.5mL / minute

**Detection:** ESI – neg - Agilent 6210 MSD TOF Mass Spectrometer

**Sample Preparation:** Sample Stock Solution was purchased from Sigma (1000mcg / mL). Sample for analysis was made by diluting the stock 1:100 in 30:70 solution A and B

**Notes:** Glyphosate is a nonselective herbicide and is used for the control of a wide range of weeds. It is strongly retained on soil components and due to its long half life and solubility in water can be detected long after application or far away from the application site.



## Attachment

**No 89 Glyphosate Analyzed by LCMS pdf 0.2 Mb** [Download File](#)

Printed from the Chrom Resource Center

Copyright 2025, All Rights Apply

**MicroSolv Technology Corporation**

9158 Industrial Blvd. NE, Leland, NC 28451

Tel: (732) 380-8900

Fax: (910) 769-9435

Email: [customers@mtc-usa.com](mailto:customers@mtc-usa.com)

Website: [www.mtc-usa.com](http://www.mtc-usa.com)