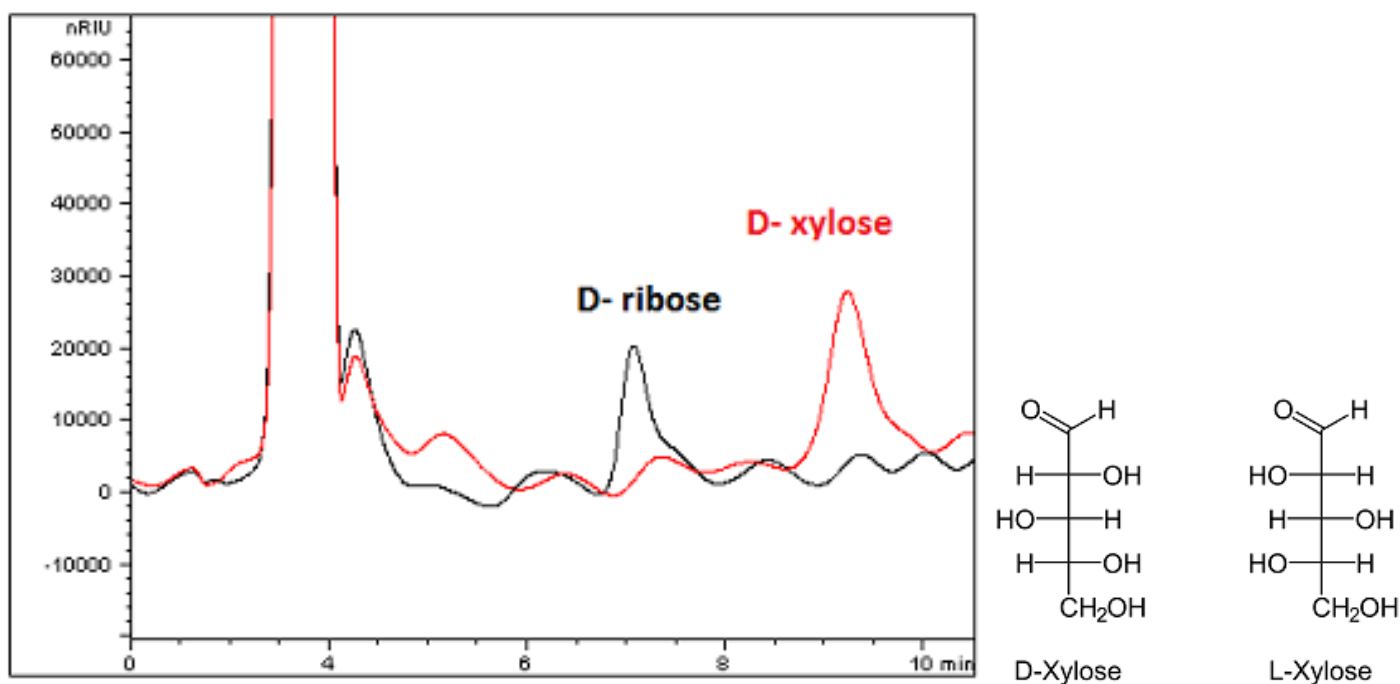


## Ribose and Xylose analysis without forming Schiff bases - AppNote

**Sugars can be difficult to analyze by HPLC due to their polarity.**

Columns with amine ligands are often used for retention of simple sugars like Ribose and Xylose, but they have a number of drawbacks. The amine group can form Schiff bases with Aldehydes in the sample, resulting in irreversible deactivation of the ligand's retention functionality.

Poor robustness and column life have been reported for Amine columns for this reason. The Cogent Amide Column avoids this problem because its ligand is less chemically reactive than an amine, while still obtaining good retention and separation of the two sugar analytes.



### Peaks:

1. D-Ribose
2. D-Xylose

### Method Conditions:

**Column:** Cogent Amide™, 4 µm, 100 Å

**Catalog No.:** [40036-10P](#)

**Dimensions:** 4.6 x 100mm

**Mobile Phase:** 95% acetonitrile / 5% DI water / 0.1% triethylamine (TEA) (v/v)

**Flow Rate:** 0.5 mL / minute

**Detection:** Refractive index

**Injection Volume:** 5ul

**Sample Preparation:** D-ribose and D-xylose reference standards (3 mg/mL) in diluent of 50% acetonitrile / 50% DI water / 0.1% TEA (v/v)

**Note:** Ribose and xylose are aldopentoses that differ only by a chiral center. In addition to the open chain forms, these sugars exist in equilibrium with ring forms (five or six members) as well as  $\alpha$  and  $\beta$  anomers. Both sugars are highly polar and not generally suitable for conventional Reversed Phase retention.



## Attachment

**No 353 Ribose and Xylose.pdf** 0.4 Mb [Download File](#)

Printed from the Chrom Resource Center

Copyright 2025, All Rights Apply

**MicroSolv Technology Corporation**

9158 Industrial Blvd. NE, Leland, NC 28451

Tel: (732) 380-8900

Fax: (910) 769-9435

Email: [customers@mtc-usa.com](mailto:customers@mtc-usa.com)

Website: [www.mtc-usa.com](http://www.mtc-usa.com)