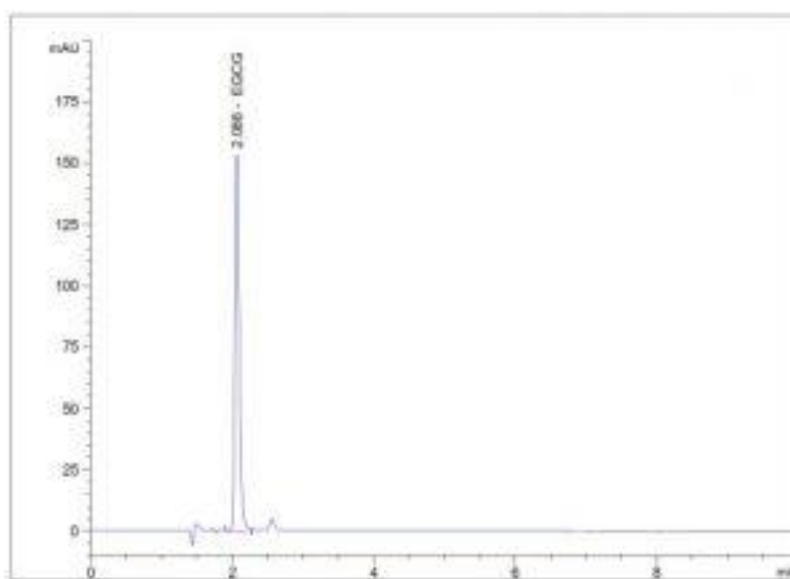


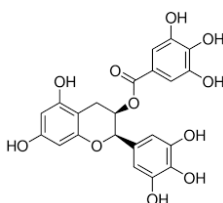
Epigallocatechin Gallate Analyzed with HPLC – AppNote

A Reliable Method for a EGCG Analysis

This Epigallocatechin Gallate (EGCG) Assay produces Run to Run consistency and Precision with Retention Time RSD values of 0.02%. This is a sensitive HPLC-UV Method that may be used for quantification of EGCG in food and beverage formulations.



Peak:



Epigallocatechin Gallate

Method Conditions:

Column: Cogent Zx Similar C18, 5 μ m, 100Å

Catalog No.: [65518-15P](#)

Dimensions: 4.6mm x 150mm

Mobile Phase: 25:75 Acetonitrile / DI Water with 1.0% Acetic Acid

Injection vol.: 100 μ L

Flow rate: 1.0mL / minute

Detection: UV @ 280nm

Column Temperature: Ambient

Sample Preparation: Epigallocatechin Gallate 100 μ g / mL in DI Water

Note 1: Epigallocatechin Gallate is the ester of Epigallocatechin and Gallic Acid, and is a type of Catechin. EGCG is the

most abundant Catechin in tea and is a polyphenol under basic research for its potential to affect human health and disease.

Note 2: The Cogent Zx Similars C18™ performs very similarly to Agilent's Zorbax™ brand C18 HPLC Columns or similar C18 Columns. This makes it an ideal Alternate in USP Methods that use the L1 Classification and Agilent's Zorbax™ brand C18 HPLC Columns.

This Method was developed by and is presented courtesy of [ARL- Eutech Scientific Services](#).



Printed from the Chrom Resource Center
Copyright 2025, All Rights Apply
MicroSolv Technology Corporation
9158 Industrial Blvd. NE, Leland, NC 28451

Tel: (732) 380-8900
Fax: (910) 769-9435
Email: customers@mtc-usa.com
Website: www.mtc-usa.com