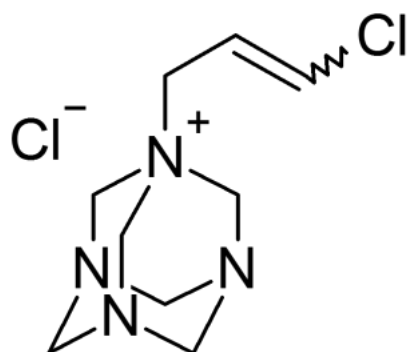


## Why am I seeing two peaks for quaternium-15 or Dowicil-75 in my LCMS data - FAQ

**Question:** I am using LC-MS and the Cogent Diamond Hydride™ HPLC column. When analyzing quaternium-15 commercially known as Dowicil-75™, I see two peaks which have the same m/z. What can be the cause? Is there an issue of peak splitting?



**Answer:** Quaternium-15 can have either cis or trans orientation on the double bond. If you see two peaks in your data, it may not be from peak splitting but rather chromatographic *separation of the two isomers*.

Click [HERE](#) for Cogent Diamond Hydride ordering information.



Printed from the Chrom Resource Center  
Copyright 2025, All Rights Apply  
**MicroSolv Technology Corporation**  
9158 Industrial Blvd. NE, Leland, NC 28451

Tel: (732) 380-8900  
Fax: (910) 769-9435  
Email: [customers@mtc-usa.com](mailto:customers@mtc-usa.com)  
Website: [www.mtc-usa.com](http://www.mtc-usa.com)