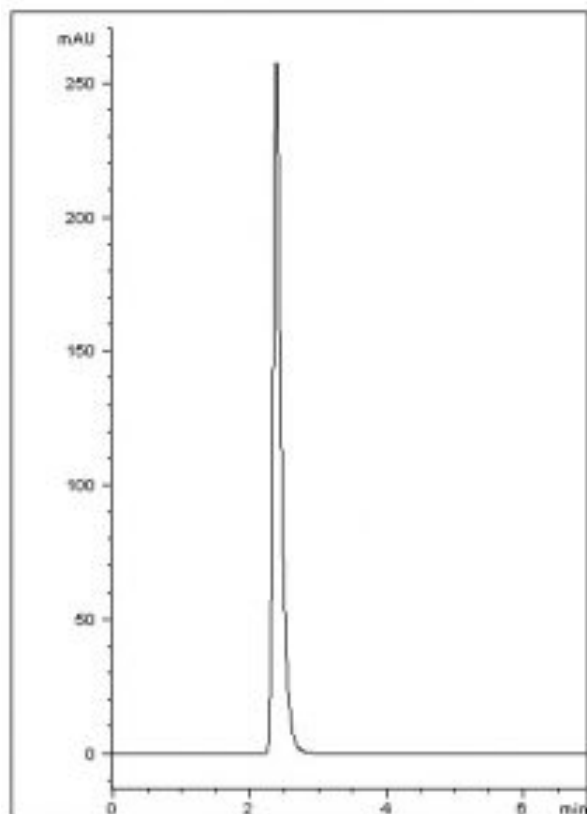


Retention of a Polypeptide Analyzed with HPLC-AppNote

Semaglutide, a Human Glucagon-like Peptide

This simple isocratic Method demonstrates good Retention of a Hydrophilic Peptide where Retention is increased in Aqueous conditions.



Peak:

Semaglutide

Method Conditions:

Column: Cogent Diamond Hydride™, 4μm, 100Å.

Catalog No.: 70000-75

Dimensions: 4.6 x 75mm

Mobile Phase: 60:30 DI Water with 0.1% Formic Acid / Acetonitrile.

Injection vol.: 1μL

Flow rate: 1.0mL / minute.

Detection: UV @ 254nm.

Sample Preparation: 0.01mg / mL Semaglutide in 50:50 Acetonitrile / DI Water.

Notes: Semaglutide is a glucagon-like peptide-1 receptor agonist. It increases the production of insulin, a hormone that lowers the blood sugar level. It also appears to enhance growth of β cells in the pancreas, which are the sites of insulin production.



Printed from the Chrom Resource Center

MicroSolv Technology Corporation

9158 Industrial Blvd. NE, Leland, NC 28451

tel. (732) 380-8900, fax (910) 769-9435

Email: customers@mtc-usa.com

Website: www.mtc-usa.com

Date: 05-05-2024