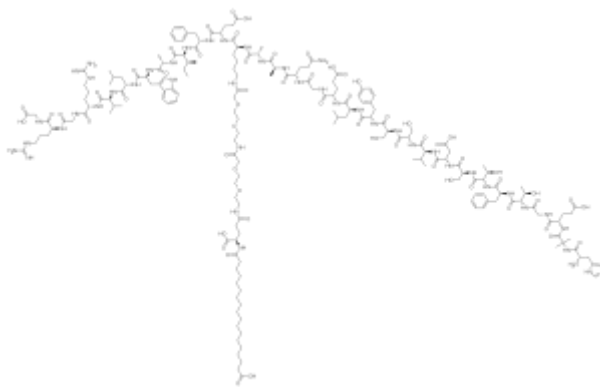
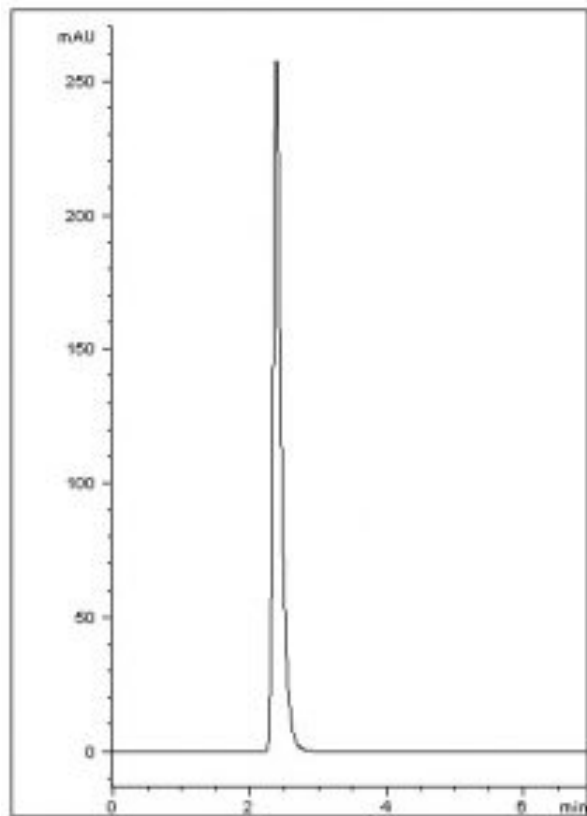


Semaglutide, a Human Glucagon-like Peptide

This simple isocratic Method demonstrates good Retention of a Hydrophilic Peptide where Retention is increased in Aqueous conditions.



Peak:
Semaglutide

Method Conditions:

Column: Cogent Diamond Hydride™, 4μm, 100Å.

Catalog No.: 70000-75

Dimensions: 4.6 x 75mm

Mobile Phase: 60:30 DI Water with 0.1% Formic Acid / Acetonitrile.

Injection vol.: 1μL

Printed from the Chrom Resource Center

Copyright 2024, All Rights Apply

MicroSolv Technology Corporation

9158 Industrial Blvd. NE, Leland, NC 28451

tel. (732) 380-8900, fax (910) 769-9435

Email: customers@mtc-usa.com

Website: www.mtc-usa.com

Flow rate: 1.0mL / minute.

Detection: UV @ 254nm.

Sample Preparation: 0.01mg / mL Semaglutide in 50:50 Acetonitrile / DI Water.

Notes: Semaglutide is a glucagon-like peptide-1 receptor agonist. It increases the production of insulin, a hormone that lowers the blood sugar level. It also appears to enhance growth of β cells in the pancreas, which are the sites of insulin production.



Printed from the Chrom Resource Center

Copyright 2024, All Rights Apply

MicroSolv Technology Corporation

9158 Industrial Blvd. NE, Leland, NC 28451

tel. (732) 380-8900, fax (910) 769-9435

Email: customers@mtc-usa.com

Website: www.mtc-usa.com