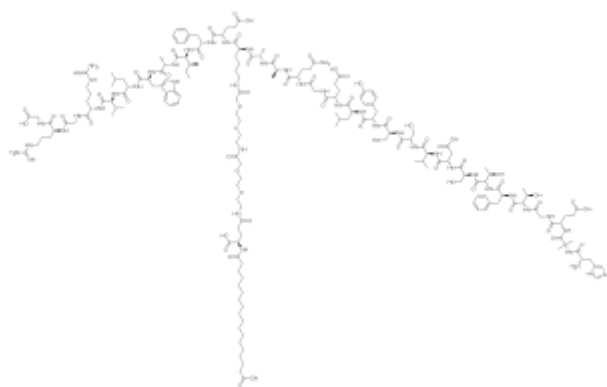
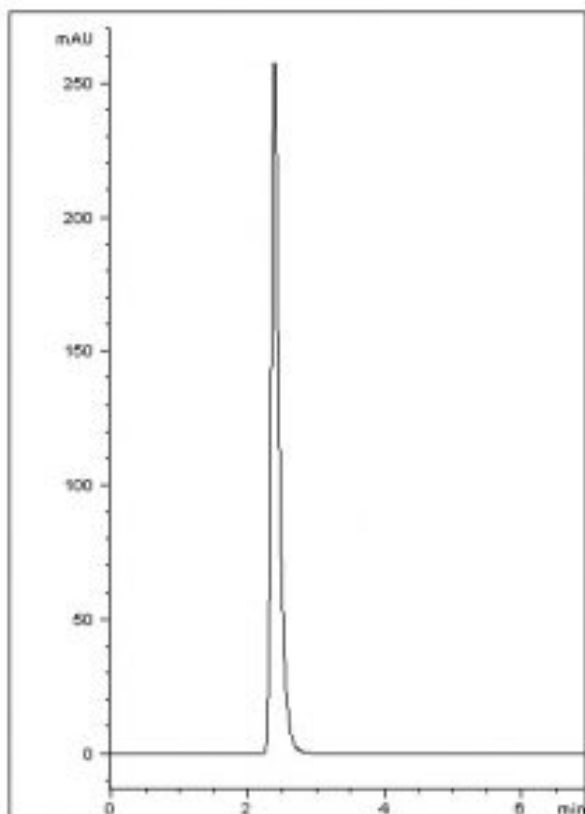


## Retention of a Polypeptide Analyzed with HPLC-AppNote

### Semaglutide, a Human Glucagon-like Peptide

This simple isocratic Method demonstrates good Retention of a Hydrophilic Peptide where Retention is increased in Aqueous conditions.



**Peak:**

Semaglutide

### Method Conditions:

**Column:** Cogent Diamond Hydride™, 4µm, 100Å.

**Catalog No.:** 70000-75

# MICROSOLV

**Dimensions:** 4.6 x 75mm

**Mobile Phase:** 60:30 DI Water with 0.1% Formic Acid / Acetonitrile.

**Injection vol.:** 1 $\mu$ L

**Flow rate:** 1.0mL / minute.

**Detection:** UV @ 254nm.

**Sample Preparation:** 0.01mg / mL Semaglutide in 50:50 Acetonitrile / DI Water.

*Notes: Semaglutide is a glucagon-like peptide-1 receptor agonist. It increases the production of insulin, a hormone that lowers the blood sugar level. It also appears to enhance growth of  $\beta$  cells in the pancreas, which are the sites of insulin production.*



Printed from the Chrom Resource Center

**MicroSolv Technology Corporation**

9158 Industrial Blvd. NE, Leland, NC 28451

tel. (732) 380-8900, fax (910) 769-9435

Email: [customers@mtc-usa.com](mailto:customers@mtc-usa.com)

Website: [www.mtc-usa.com](http://www.mtc-usa.com)

Date: 07-22-2024