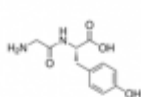
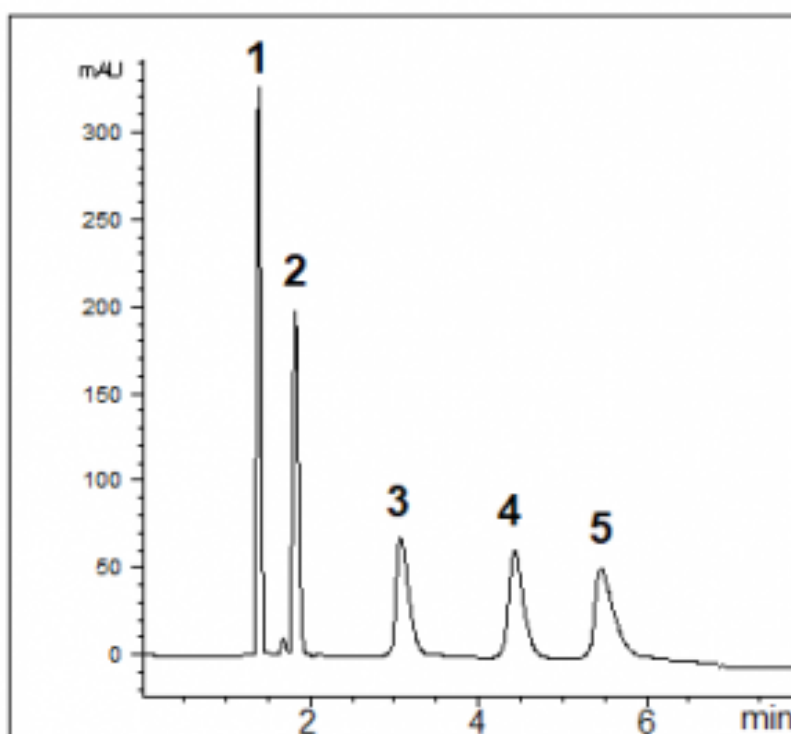


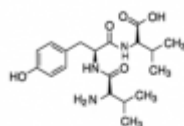
## Lipophilic Peptides Analyzed with HPLC – AppNote

### Simple Gradient for Non-Polar Peptides

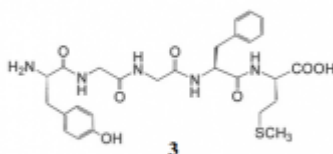
In this Method, we demonstrate the Retention of several Hydrophobic Peptides without the use of a typical Reversed Phase Column.



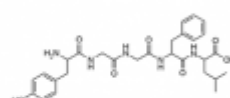
1



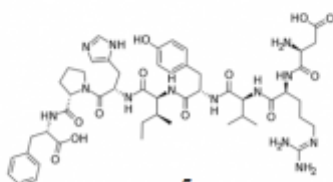
2



3



4



5

### Peak:

1. Gly-Tyr ( *Glycyl-L-tyrosine* )
2. Val-Tyr-Val ( *Valyltyrosylvaline* )
3. Met enkephalin ( *Metenkefalin* )
4. Leu enkephalin

## 5. Angiotensin II

### Method Conditions:

**Column:** Cogent Diamond Hydride™, 4µm, 100Å

**Catalog No.:** 70000-15P-2

**Dimensions:** 2.1 x 150mm

#### Mobile Phase:

A: DI Water with 0.05% Trifluoroacetic Acid (TFA)

B: Acetonitrile with 0.05% Trifluoroacetic Acid (TFA)

Time (minutes)	%B
0	10
1	10
15	30
16	10

**Post time:** 2 minutes

**Injection vol.:** 1µL

**Flow rate:** 1.0mL / minute

**Detection:** UV @ 220nm

**Sample Preparation:** 0.5mg of each compound in 1 mL of Methanol. Sample for injection was diluted to 0.1mg / mL with Acetonitrile.

**t<sub>0</sub>:** 0.95 minutes

*Note: Biomolecules are a diverse range of compounds, amino acids, proteins, peptides, nucleic acids, and obtaining quality separations is of great importance. Gly-Tyr is a dipeptide which has a role as a metabolite. Enkephalins are a family of peptides which are present in the brain and are involved in the control of pain sensation. They are endogenous peptides that act as antagonists at opioid receptors. Angiotensin increases blood pressure by causing narrowing of the blood vessels.*



Printed from the Chrom Resource Center

**MicroSolv Technology Corporation**

9158 Industrial Blvd. NE, Leland, NC 28451

tel. (732) 380-8900, fax (910) 769-9435

Email: [customers@mtc-usa.com](mailto:customers@mtc-usa.com)

Website: [www.mtc-usa.com](http://www.mtc-usa.com)

Date: 07-22-2024