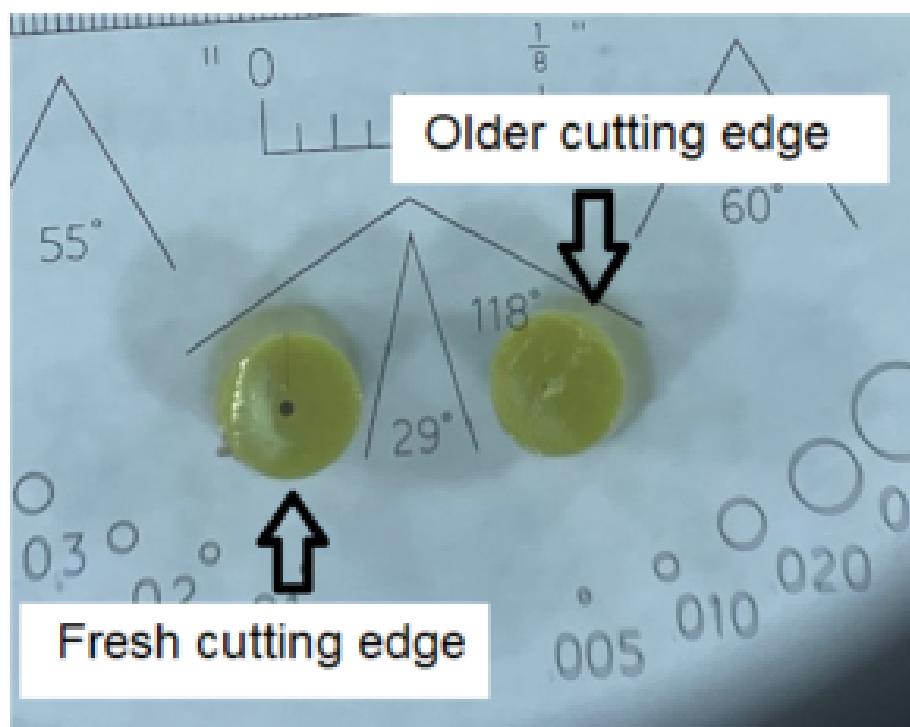


Importance of Fresh Cutting Edges in Tubing- Tech Information

Using an older cutting edge to cut PEEK tubing can result in the tubing being nearly crushed and losing its concentricity. This can significantly impact the chromatographer, as the pressure will be substantially different and may lead to lost time troubleshooting an instrument or sample preparation when the issue may be due to a dull cutting edge.

Below is an image of PEEK tubing with a 0.007" (0.18 mm) ID and a 1/16" (1.6 mm) OD, showing the difference between new and old cutting edges used to cut the tubing.



Click [HERE](#) for Tools for Chromatography Ordering Information

Printed from the Chrom Resource Center

Copyright 2024, All Rights Apply

MicroSolv Technology Corporation

9158 Industrial Blvd. NE, Leland, NC 28451

tel. (732) 380-8900, fax (910) 769-9435

Email: customers@mtc-usa.com

Website: www.mtc-usa.com