

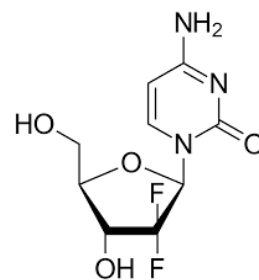
## Gemcitabine Assay Analyzed with HPLC - AppNote

### A Reliable Method for a Chemotherapeutic Drug

This Gemcitabine Assay is easily performed and demonstrates Run to Run consistency and Precision with Retention Time RSD values below 0.4%. This Method shows consistency and reliability for analysis of this Nucleoside Chemotherapeutic.



#### Peak:



Gemcitabine

#### Method Conditions:

**Column:** Cogent RP C8™, 5µm, 150Å



**Catalog No.:** 68508-25P

**Dimensions:** 4.6mm x 250mm

**Mobile Phase:** 13.8g of Monobasic Sodium Phosphate and 2.5ml of Phosphoric Acid in 1L of Water.

**Injection vol.:** 20µL

**Flow rate:** 1.2mL / minute

**Detection:** UV @ 275nm

**Sample Preparation:** Gemcitabine 1.0mg / mL in DI Water

***Note:** Gemcitabine is a nucleoside analog and a chemotherapeutic agent. It is used as adjunct therapy in the treatment of certain types of ovarian cancer, non-small cell lung carcinoma, metastatic breast cancer, and as a single agent for pancreatic cancer.*

**This Method was developed by and is presented courtesy of [ARL- Eutech Scientific Services, Inc.](#)**