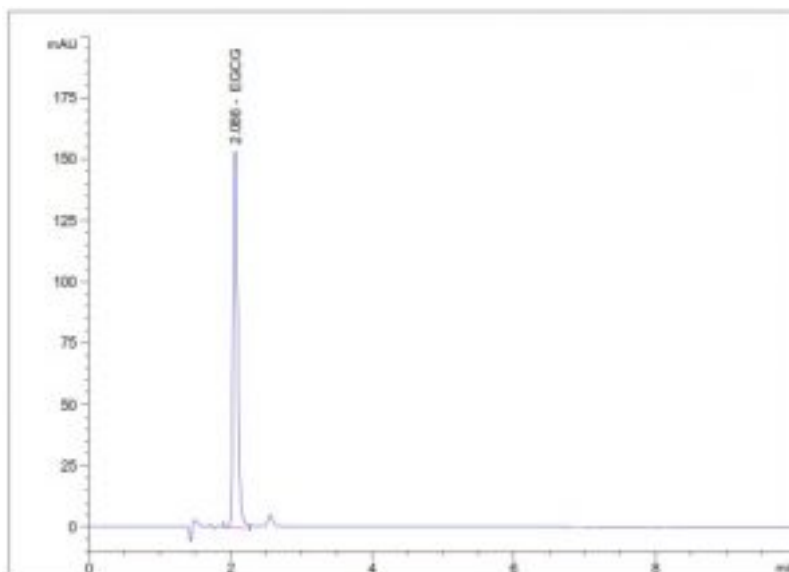


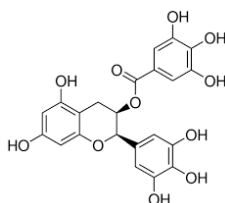
## Epigallocatechin Gallate Analyzed with HPLC – AppNote

### A Reliable Method for a EGCG Analysis

This Epigallocatechin Gallate (EGCG) Assay produces Run to Run consistency and Precision with Retention Time RSD values of 0.02%. This is a sensitive HPLC-UV Method that may be used for quantification of EGCG in food and beverage formulations.



#### Peak:



Epigallocatechin Gallate

### Method Conditions:

**Column:** Cogent Zx Similar C18, 5 $\mu$ m, 100Å

**Catalog No.:** 65518-15P

**Dimensions:** 4.6mm x 150mm

**Mobile Phase:** 25:75 Acetonitrile / DI Water with 1.0% Acetic Acid

**Injection vol.:** 100 $\mu$ L

**Flow rate:** 1.0mL / minute

**Detection:** UV @ 280nm

**Column Temperature:** Ambient

**Sample Preparation:** Epigallocatechin Gallate 100 $\mu$ g / mL in DI Water

Printed from the Chrom Resource Center

Copyright 2024, All Rights Apply

**MicroSolv Technology Corporation**

9158 Industrial Blvd. NE, Leland, NC 28451

tel. (732) 380-8900, fax (910) 769-9435

Email: customers@mtc-usa.com

**Note 1:** Epigallocatechin Gallate is the ester of Epigallocatechin and Gallic Acid, and is a type of Catechin. EGCG is

Website: www.mtc-usa.com

*the most abundant Catechin in tea and is a polyphenol under basic research for its potential to affect human health and disease.*

**Note 2:** *The Cogent Zx Similar C18™ performs very similarly to Agilent's Zorbax™ brand C18 HPLC Columns or similar C18 Columns. This makes it an ideal Alternate in USP Methods that use the L1 Classification and Agilent's Zorbax™ brand C18 HPLC Columns.*

**This Method was developed by and is presented courtesy of [ARL- Eutech Scientific Services](#).**



Printed from the Chrom Resource Center

Copyright 2024, All Rights Apply

**MicroSolv Technology Corporation**

9158 Industrial Blvd. NE, Leland, NC 28451

tel. (732) 380-8900, fax (910) 769-9435

Email: [customers@mtc-usa.com](mailto:customers@mtc-usa.com)

Website: [www.mtc-usa.com](http://www.mtc-usa.com)