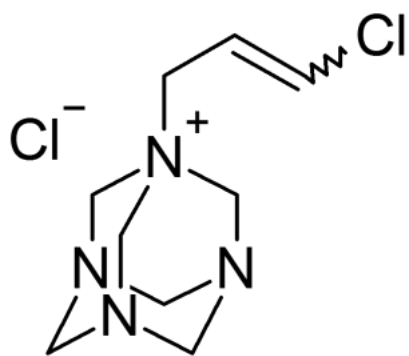


Why am I seeing two peaks for quaternium-15 or Dowicil-75 in my LCMS data - FAQ

Question: I am using LC-MS and the Cogent Diamond Hydride™ HPLC column. When analyzing quaternium-15 commercially known as Dowicil-75™, I see two peaks which have the same m/z. What can be the cause? Is there an issue of peak splitting?



Answer: Quaternium-15 can have either cis or trans orientation on the double bond. If you see two peaks in your data, it may not be from peak splitting but rather chromatographic *separation of the two isomers*.

Click [HERE](#) for Cogent Diamond Hydride ordering information.

