

### Method Optimization in Separation of Ethyl Glucuronide and Ethyl Sulfate

Ethyl Glucuronide and Ethyl Sulfate are compounds that are not well-retained or separated using Reversed Phase Columns due to their hydrophilicity thus requiring high water concentrations in the Mobile Phase.

To avoid the use of high water content Mobile Phases, HILIC columns were sought as a solution. Due to the mechanism of separation between the Mobile Phase and water-rich layer on the stationary phase, column equilibration was lengthy, noted to be around 14 minutes between run times. Cogent TYPE-C™ Silica was considered a good substitution for the mildly hydrophobic surface of the silica hydride material. The Cogent UDA™ column in conjunction with MS detection was shown to circumvent these issues.

The presented data illustrates the excellent separation and detection of these two compounds with rapid Column equilibration, being 2 minutes between gradient runs.

Printed from the Chrom Resource Center

Copyright 2024, All Rights Apply

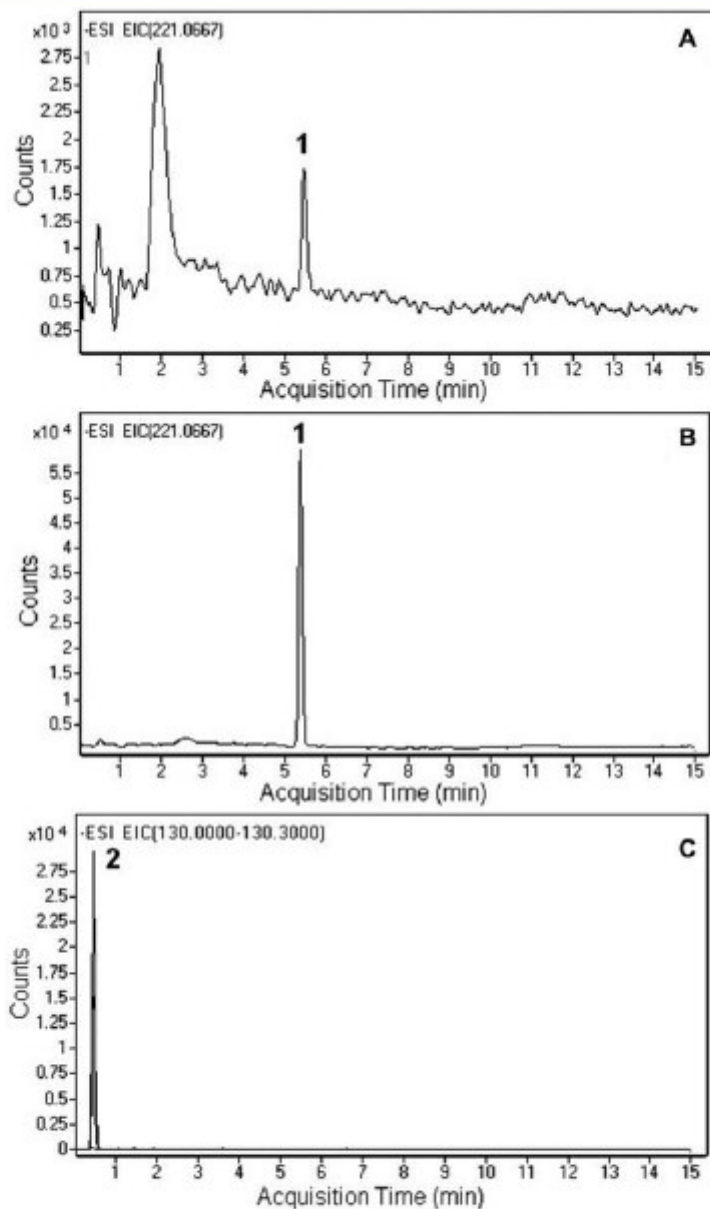
**MicroSolv Technology Corporation**

9158 Industrial Blvd. NE, Leland, NC 28451

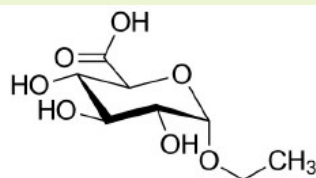
tel. (732) 380-8900, fax (910) 769-9435

Email: [customers@mtc-usa.com](mailto:customers@mtc-usa.com)

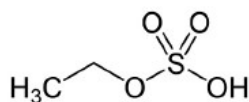
Website: [www.mtc-usa.com](http://www.mtc-usa.com)



Analysis of hair sample on the UDA column.  
**(A)** Unspiked hair sample. **(B)** Hair sample spiked with 6 ppm EtG standard. **(C)** Extracted ion chromatogram of 5 ppm d5 -EtS standard.



Ethyl glucuronide



Ethyl sulfate

**Peaks:**

Printed from the Chrom Resource Center

Copyright 2024, All Rights Apply

**MicroSolv Technology Corporation**

158 Industrial Blvd. NE, Leland, NC 28451

tel. (732) 380-8900, fax (910) 769-9435

Email: [customers@mtc-usa.com](mailto:customers@mtc-usa.com)

Website: [www.mtc-usa.com](http://www.mtc-usa.com)

1. Ethyl Glucuronide - EtG,  $m/z = 221.0667$
2. Ethyl Sulfate - EtS,  $m/z = 131.0295$

## Method Conditions:

**Column:** Cogent UDA™, 4 $\mu$ m, 100Å

**Catalog No.:** 40031-15P-2

**Dimensions:** 2.1 x 150 mm

### Mobile Phase:

A: DI Water/ 10 mM Ammonium Formate (v/v)

B: 95% Acetonitrile/ 5% DI H<sub>2</sub>O/ 10 mM Ammonium Formate (v/v)

### Gradient:

Time (Minutes)	%B
0	95
3	30
6	30
8	95
10	95

**Flow rate:** 0.4 mL/minute

**Detection:** ESI - NEG - Agilent 6220 MSD TOF Mass Spectrometer with a dual sprayer electrospray source

**Sample:** 0.2-0.7 mg/mL DI Water

**Notes:** Ethyl glucuronide and Ethyl Sulfate are metabolites of Ethanol, which are formed by enzymatic conjugation of Ethanol with Glucuronic Acid. This process, known as glucuronidation, is the result of exposure to Ethanol. These compounds are used as a long-term biomarkers in humans to test for alcohol abuse.



### Attachment

**Ethyl Glucuronide AppNote pdf** 0.2 Mb [Download File](#)

Printed from the Chrom Resource Center

Copyright 2024, All Rights Apply

**MicroSolv Technology Corporation**

9158 Industrial Blvd. NE, Leland, NC 28451

tel. (732) 380-8900, fax (910) 769-9435

Email: [customers@mtc-usa.com](mailto:customers@mtc-usa.com)

Website: [www.mtc-usa.com](http://www.mtc-usa.com)