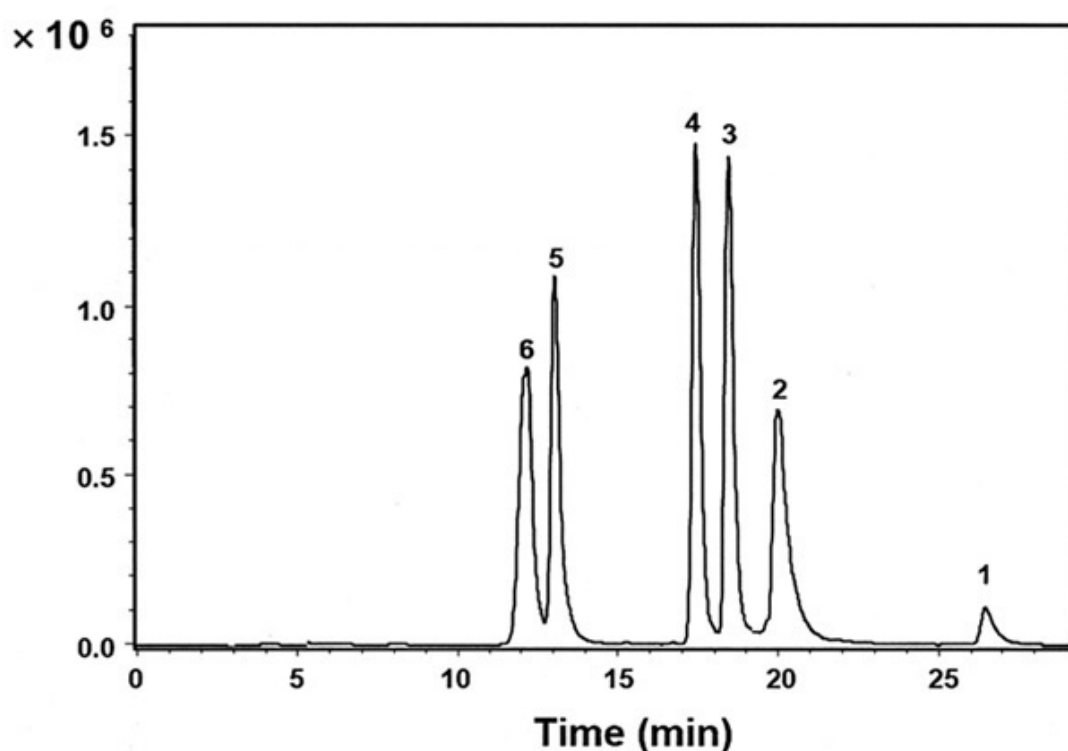


Hydrophobic and Hydrophilic Peptides Analyzed with HPLC - AppNote

Simultaneous Separation using a Capillary Column

The studied analytes comprised some very Hydrophobic and Hydrophilic Peptides with diverse isoelectric points (pI) and thus served as useful probes to explore the potential of this App Note in this field of Bioanalysis.

The figure shows how these Peptides of widely disparate physicochemical properties could be separated in a single run. With these capabilities, laboratories can be more efficient and increase throughput by not having to perform separate analyses for both Hydrophobic and Hydrophilic Peptides using different Columns.



Peptide code	Sequence	Calculated hydrophobicity	pI
1	H-Gly-Arg-Ala-Asp-Ser-Pro-Lys-OH	-2.31	9.4
2	H-Lys-Gln-Ala-Gly-Asp-Val-OH	0.35	5.8
3	H-Tyr-Ile-Gly-Ser-Arg-OH	4.11	9.1
4	H-Trp-His-Trp-Leu-Gln-Leu-OH	9.65	7.1
5	H-Tyr-Gly-Gly-Phe-Leu-OH	10.61	5.5
6	H-Tyr-Tyr-Tyr-Tyr-Tyr-Tyr-OH	11.34	5.5

Peaks:

1. H-Gly-Arg-Ala-Asp-Ser-Pro-Lys-OH
2. H-Lys-Gln-Ala-Gly-Asp-Val-OH
3. H-Tyr-Ile-Gly-Ser-Arg-OH
4. H-Trp-His-Trp-Leu-Gln-Leu-OH

5. H-Tyr-Gly-Gly-Phe-Leu-OH
6. H-Tyr-Tyr-Tyr-Tyr-Tyr-Tyr-OH

Method Conditions:

Column: Cogent Diamond Hydride™, 4um, 100A R&D Capillary Column

Dimensions: 0.3mm x 150mm

Solvents:

A: DI Water / 0.5% Formic Acid (v/v)

B: Acetonitrile / 0.5% Formic Acid (v/v)

Gradient:

Time (minutes)	%B
0	90
5	90
10	70
20	60
20.1	30
30	30

Injection Volume: 0.1µL

Flow Rate: 4µL / minute

Detection: ESI - POS - Agilent 6210 MSD TOF Mass Spectrometer

Sample Preparation: 10µg / mL of each Peptide in 50% Solvent A / 50% Solvent B.

Notes: The data and discussion presented here are delineated in greater detail in a full research article. Reference: R.I. Boysen, Y. Yang, J. Chowdhury, M.T. Matyska, J.J. Pesek, M.T.W. Hearn, "Simultaneous separation of hydrophobic and hydrophilic peptides with a silica hydride stationary phase using aqueous normal phase conditions." J. Chromatogr. A, 2011, 1218, 8021-8026.



Attachment

No 371 Hydrophobic and Hydrophilic Peptides Analyzed with HPLC pdf 0.3 Mb [Download File](#)

Printed from the Chrom Resource Center

MicroSolv Technology Corporation

9158 Industrial Blvd. NE, Leland, NC 28451

tel. (732) 380-8900, fax (910) 769-9435

Email: customers@mtc-usa.com

Website: www.mtc-usa.com

Date: 02-05-2024