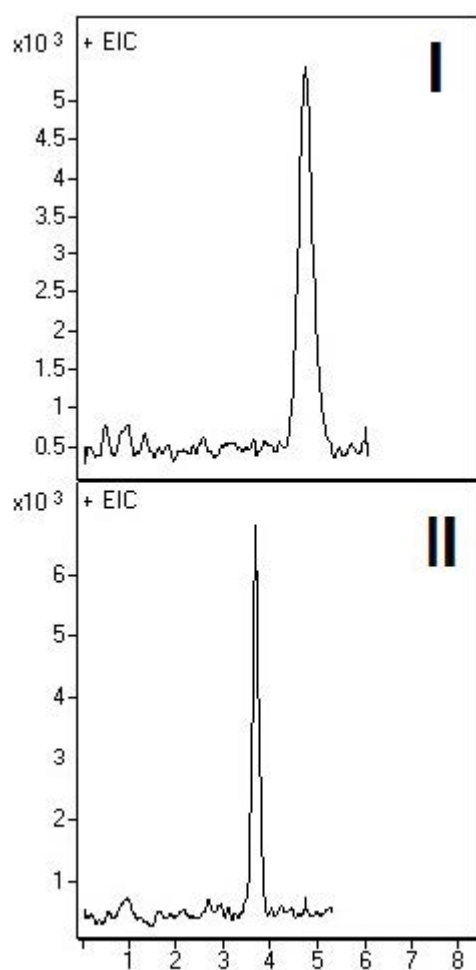


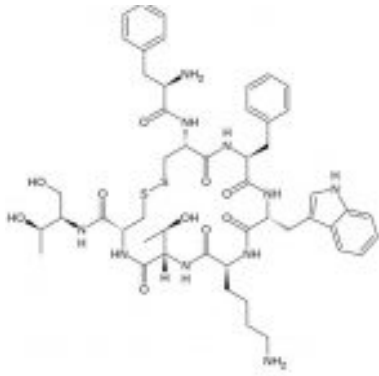
## Octreotide Analyzed with LCMS – AppNote

### Retained Isocratically or With a Gradient

This cyclic Octapeptide can be retained with simple Isocratic Mobile Phase conditions of 50:50 Solvent A / Solvent B (see *Figure I*). In addition, use of a Gradient produces a sharper Peak if desired (*Figure II*). Note, that the Gradient starts at an unusually high percent of Water (50%) for an Aqueous Normal Phase (ANP) application, due to the highly polar nature of the molecule.

With its two basic Amino Acid residues, the Octapeptide may lead to tailing due to silanolic interactions on some conventional Silica-based HPLC stationary phases, but here the peak shape is very symmetrical.





**Peak:**  
Octreotide

## Method Conditions:

**Column:** Cogent Diamond Hydride™, 4µm, 100Å

**Catalog No.:** 70000-15P-2

**Dimensions:** 2.1 x 150 mm

### Solvents:

A: DI Water / 0.1% Formic Acid (v/v)

B: Acetonitrile / 0.1% Formic Acid (v/v)

**Figure I:** 50% solvent A/ 50% solvent B

### Figure II: Gradient:

Time (Minute)	%B
0	50
3	20
6	20
7	50

**Injection Volume:** 1µL

**Flow Rate:** 0.4mL / minute

**Detection:** ESI - POS - Agilent 6210 MSD TOF Mass Spectrometer

**Sample Preparation:** Reference standard solution of Octreotide

**Notes:** Octreotide mimics the naturally occurring hormone Somatostatin. It is used for the treatment of growth hormone producing tumors and other related medical applications.



No 367 Octreotide Analyzed with LCMS pdf 0.1 Mb [Download File](#)

Printed from the Chrom Resource Center

**MicroSolv Technology Corporation**

9158 Industrial Blvd. NE, Leland, NC 28451

tel. (732) 380-8900, fax (910) 769-9435

Email: [customers@mtc-usa.com](mailto:customers@mtc-usa.com)

Website: [www.mtc-usa.com](http://www.mtc-usa.com)

Date: 07-03-2024