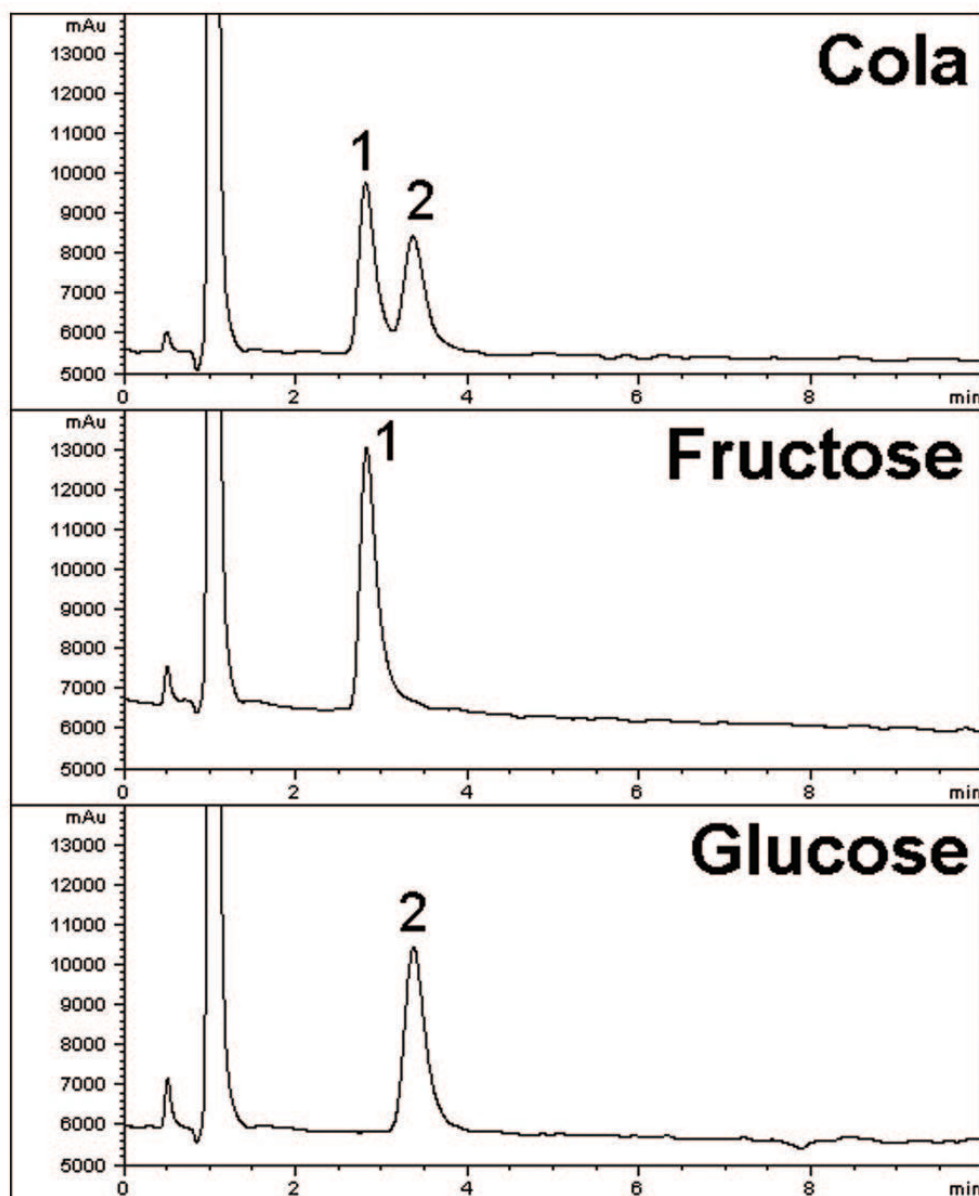


Separation of Polar Sugars in Coca Cola©

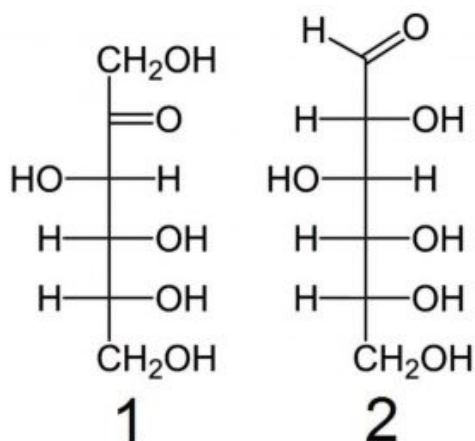
The high sugar content of soda beverages can be observed in this Chromatographic separation of Fructose and Glucose in cola. The two Sugars are retained and separated with the use of the Cogent Amide Column. Data from reference standards is also shown for peak identity confirmation.

A preconditioning protocol with a TEA-based Mobile Phase was found to improve the peak shape of Fructose. Refractive Index is an ideal choice for this application because the Sugars are UV-transparent and their concentrations are high enough (even with a 5X dilution) to be easily observed with a relatively insensitive detector such as this.

The large Peak at the Solvent front is characteristic of RI detection when the sample diluent differs from the Mobile Phase. In this case, a diluent with higher water content than the Mobile Phase was chosen for the purpose of analyte solubility.



ed from the Chrom Resource Center
Copyright 2024, All Rights Apply
icroSolv Technology Corporation
ustrial Blvd. NE, Leland, NC 28451
(732) 380-8900, fax (910) 769-9435
Email: customers@mtc-usa.com
Website: www.mtc-usa.com

**PEAKS:**

1. D-Fructose
2. D-Glucose

Method Conditions

Column: Cogent Amide™, 4µm, 100Å

Catalog No.: 40036-05P

Dimensions: 4.6 x 50mm

Mobile Phase:

5% DI Water / 95% Acetonitrile (v/v),

15 min preconditioning with 10% DI Water / 90% Acetonitrile / 0.1% Triethylamine (TEA) (v/v)

Injection vol.: 1µL

Flow rate: 1.0 mL/minute

Detection: Refractive Index

Sample: Coca-Cola soda sample was filtered (0.45µm, nylon) and diluted 1:5 with a Diluent of 50/50 Acetonitrile / DI Water.

t₀: 0.8 minutes

Note: Coca-Cola was invented by John Pemberton, who was wounded in the Civil War and consequently became addicted to morphine. He devised a recipe called "Pemberton's French Wine Coca" that was intended as a medicinal agent and substitute for morphine. When laws were enacted that forced Pemberton to create a non-alcoholic version of the drink, the first formulation of Coca-Cola was born.

**Attachment**

No 358 Fructose and Glucose in Coca-Cola.pdf 0.5 Mb [Download File](#)

Printed from the Chrom Resource Center

Copyright 2024, All Rights Apply

MicroSolv Technology Corporation

9158 Industrial Blvd. NE, Leland, NC 28451

tel. (732) 380-8900, fax (910) 769-9435

Email: customers@mtc-usa.com

Website: www.mtc-usa.com