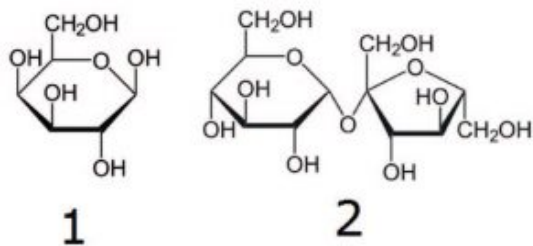
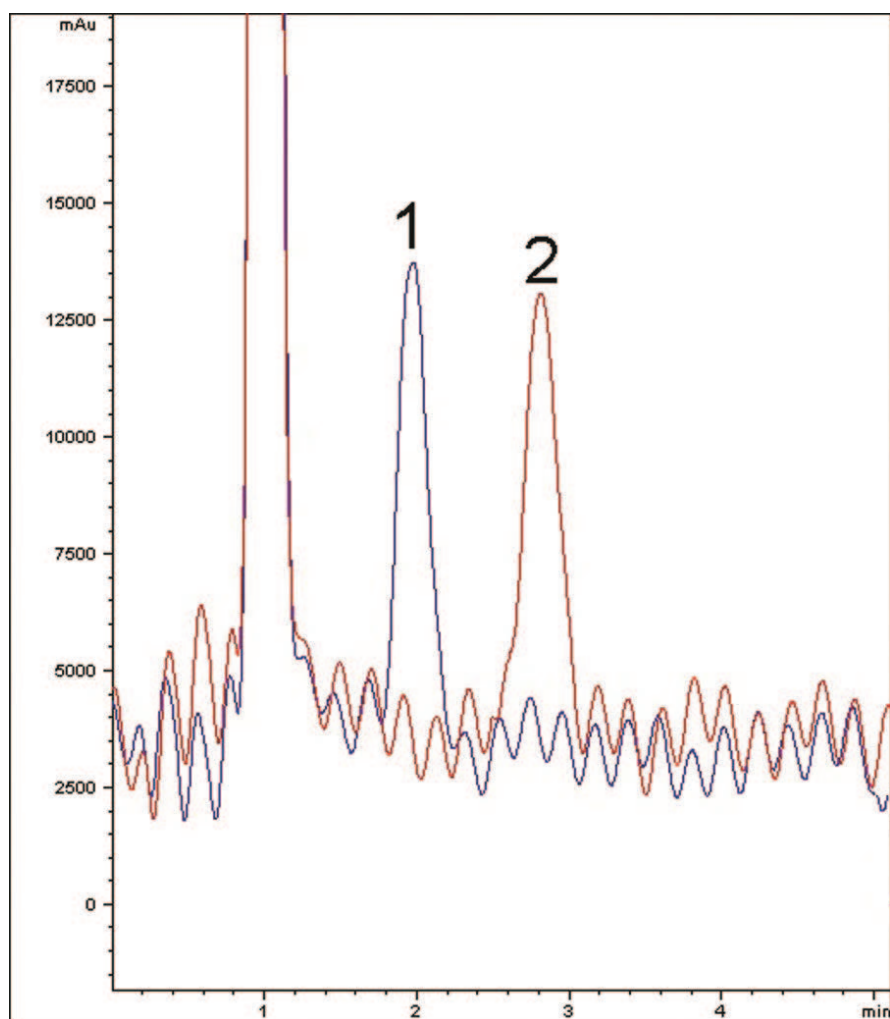


## Galactose and Sucrose - AppNote

### Retention and Separation of Mono and Disaccharides

This application demonstrates the ability of the Cogent Amide Column to retain two highly polar test solutes. Sucrose, for example, has a log P of -3.7 and hence would be unlikely to retain in Reversed Phase. Excellent separation is obtained here for these Mono and Disaccharides. The noisy baseline is simply due to the inherent limitations of the Refractive Index Detector, used in this case due to the lack of chromophores in these molecules. The large peak at 1 minute is from the solvent front.



#### Peaks:

1. D-Galactose
2. Sucrose

## Method Conditions

**Column:** Cogent Amide™, 4µm, 100Å

**Catalog No.:** 40036-05P

**Dimensions:** 4.6 x 50mm

**Mobile Phase:**

A: 90% DI Water / 10% Acetonitrile / 0.1% Formic Acid (v/v)

B: Acetonitrile / 0.1% Formic Acid (v/v)

**Flow rate:** 1.0 mL/minute

**Detection:** Refractive Index

**Injection vol.:** 4µL

**Sample Preparation:** D-Galactose and Sucrose reference standards (1 mg/mL) in diluent of 30% Acetonitrile / 70% DI Water (v/v)

*Note: Galactose is a monosaccharide and Sucrose (common name “table sugar”) is a disaccharide. Although a ubiquitous component of sweet foods and beverages today, refined Sucrose was once considered a luxury in many parts of the world.*



### Attachment

No 355 Galactose and Sucrose pdf 0.4 Mb [Download File](#)

Printed from the Chrom Resource Center

**MicroSolv Technology Corporation**

9158 Industrial Blvd. NE, Leland, NC 28451

tel. (732) 380-8900, fax (910) 769-9435

Email: [customers@mtc-usa.com](mailto:customers@mtc-usa.com)

Website: [www.mtc-usa.com](http://www.mtc-usa.com)

Date: 07-22-2024