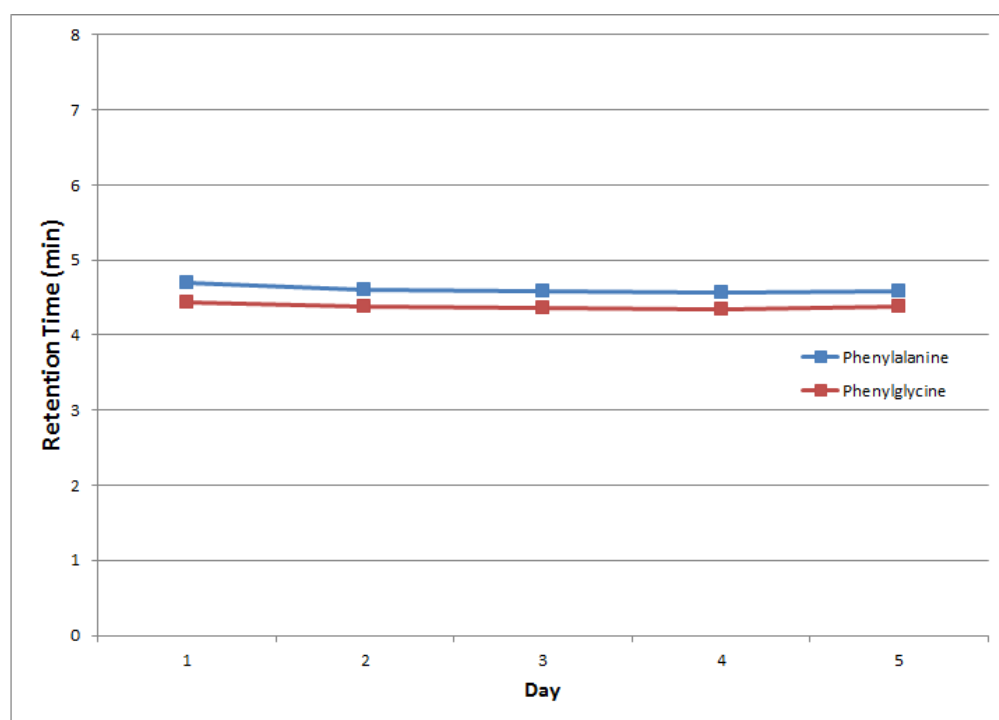


Cogent Diamond Hydride 2.0 HPLC column retention time precision – AppNote

This graph is from a study investigating the day to day retention time precision with two test solutes on the Cogent Diamond Hydride 2.0™ HPLC column



Peaks:

Blue Trace: Phenylalanine

Red Trace: Phenylglycine

Many factors can affect column **robustness** and lifetime, so it is not possible to define specific values for those parameters.

Mobile Phase:

A: DI Water / 0.1% Formic Acid

B: Acetonitrile / 0.1% Formic Acid

Flow Rate: 0.3mL / minute

Injection Volume: 0.2uL

Detection: UV 254nm

Gradient:

| Time (minutes) | %B |
|----------------|----|
| 0 | 90 |
| 6 | 20 |
| 7 | 20 |



[Cogent Diamond Hydride HPLC Column Ordering Information](#)

Printed from the Chrom Resource Center

MicroSolv Technology Corporation

9158 Industrial Blvd. NE, Leland, NC 28451

tel. (732) 380-8900, fax (910) 769-9435

Email: customers@mtc-usa.com

Website: www.mtc-usa.com

Date: 05-19-2024