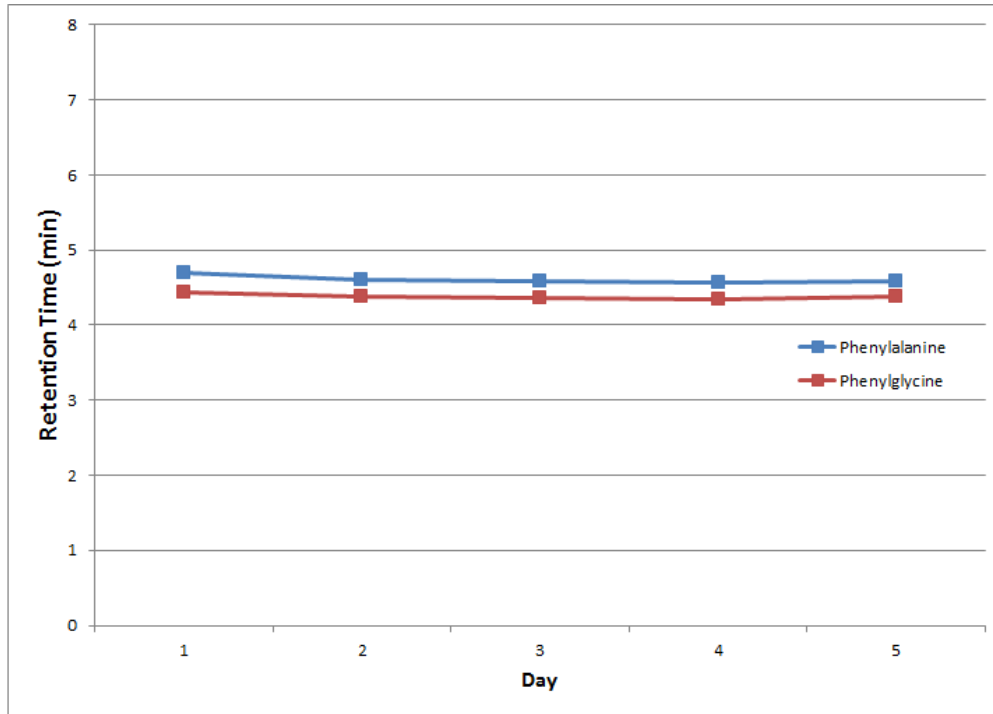




Cogent Diamond Hydride 2.0 HPLC column retention time precision - AppNote

This graph is from a study investigating the day to day retention time precision with two test solutes on the Cogent Diamond Hydride 2.0™ HPLC column



Peaks:

Blue Trace: Phenylalanine

Red Trace: Phenylglycine



Many factors can affect column **robustness** and lifetime, so it is not possible to define specific values for those parameters.

Mobile Phase:

A: DI Water / 0.1% Formic Acid

B: Acetonitrile / 0.1% Formic Acid

Flow Rate: 0.3mL / minute

Injection Volume: 0.2uL

Detection: UV 254nm

Gradient:

Time (<i>minutes</i>)	%B
0	90
6	20
7	20
8	90

MICRO**SOLV** TECHNOLOGY CORPORATION
HPLC Columns and Chromatography Accessories



COGENT
HPLC Columns™

[Cogent Diamond Hydride HPLC Column Ordering Information](#)