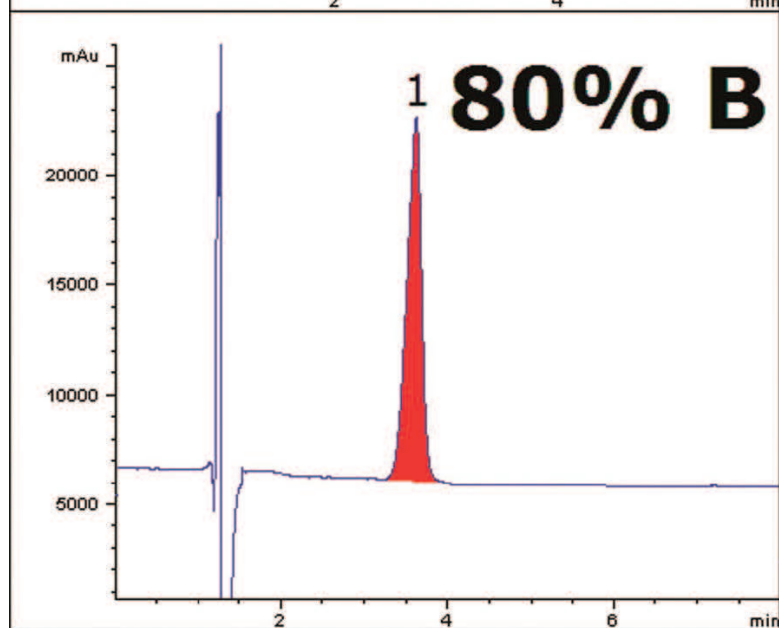
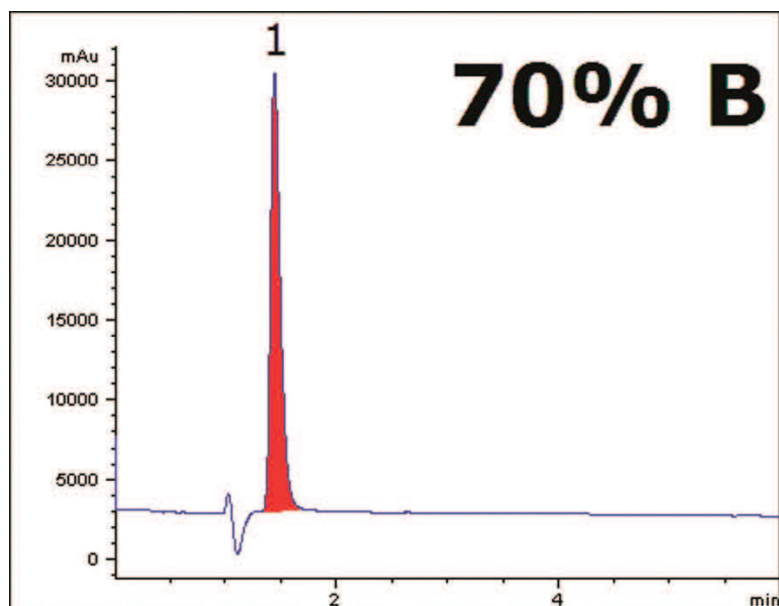


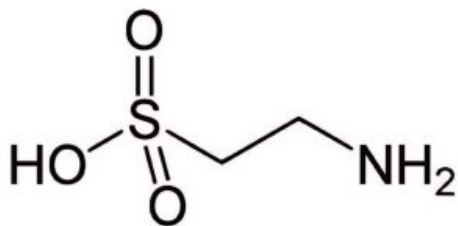
## Taurine with HPLC & Refractive Index - AppNote

### Retention of Highly Polar Compound

The food and beverage industry may need reliable methods for assay for Taurine in their products. However, its analysis is complicated by the lack of chromophores in its structure. LC-MS can be used instead, but many QC labs may not have this instrumentation or might prefer a more simple detection method for routine assays. Here, simple isocratic methods are shown for retention of a Taurine standard.

The increased retention at higher organic content in the Mobile Phase illustrates the chromatographic behavior of the Cogent Diamond Hydride Column for retention of Polar compounds. As a highly Polar compound, Taurine can be difficult to retain by conventional Reversed Phase methods.





**Peak:**

Taurine

## Method Conditions

**Column:** Cogent Diamond Hydride™, 4µm, 100Å

**Catalog No.:** 70000-7.5P

**Dimensions:** 4.6 x 75mm

Mobile Phase:

A: DI Water / 0.1% Formic Acid (v/v)

B: Acetonitrile / 0.1% Formic Acid (v/v)

**Flow rate:** 1.0 mL/minute

**Detection:** Refractive Index

**Injection vol.:** 4µL

**Sample Preparation:** 8 mg/mL Taurine reference standard in diluent of 80/20 solvent A / solvent B.

**t<sub>0</sub>:** 0.9 minutes

**Note:** Taurine is added to many popular energy drinks today. It is found naturally in animal tissues and is a major constituent of bile.



## Attachment

No 347 Taurine by HPLC-Refractive Index pdf 0.4 Mb [Download File](#)

Printed from the Chrom Resource Center

**MicroSolv Technology Corporation**

9158 Industrial Blvd. NE, Leland, NC 28451

tel. (732) 380-8900, fax (910) 769-9435

Email: [customers@mtc-usa.com](mailto:customers@mtc-usa.com)

Website: [www.mtc-usa.com](http://www.mtc-usa.com)

Date: 07-22-2024