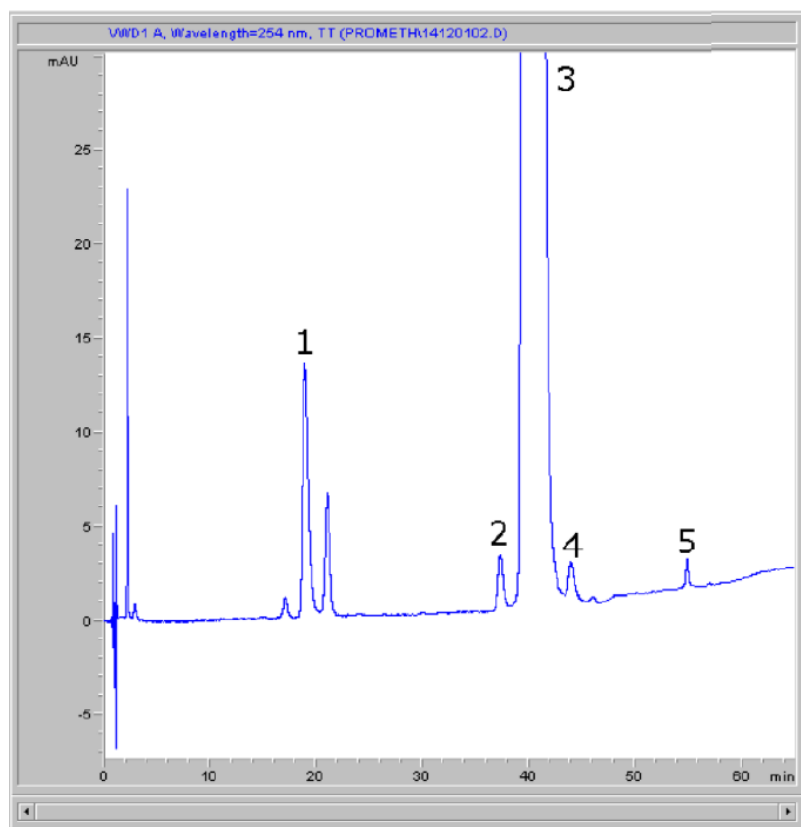


Two methods for analysis of Promethazine Tablets address difficulties associated with HPLC for these formulations. The first one discussed is the Assay Method. Here a simple isocratic approach is used and a symmetrical peak shape is obtained for the API. The method meets system suitability criteria in terms of peak area precision, tailing factor, and plate count.

The impurity method; all of the known impurities could be resolved and quantitation of the specified impurity Promethazine Sulfoxide could be performed. The results showed it was below the safety threshold in this formulation.

Click Download File Below for Full Study Conditions.



Peaks:

1. Promethazine Sulfoxide
2. N-Desmethyl Promethazine Derivate
3. Promethazine
4. Iso-Promethazine
5. Phenothiazine

Attachment

No 344 Promethazine Assay & Impurity Methods pdf 0.5 Mb [Download File](#)

Printed from the Chrom Resource Center

Copyright 2024, All Rights Apply

MicroSolv Technology Corporation
9158 Industrial Blvd. NE, Leland, NC 28451
tel. (732) 380-8900, fax (910) 769-9435
Email: customers@mtc-usa.com
Website: www.mtc-usa.com