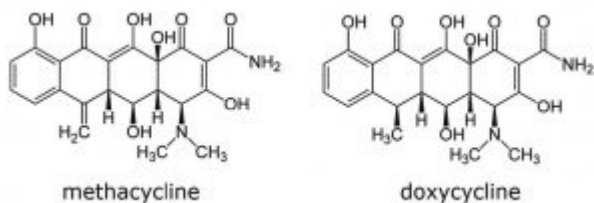
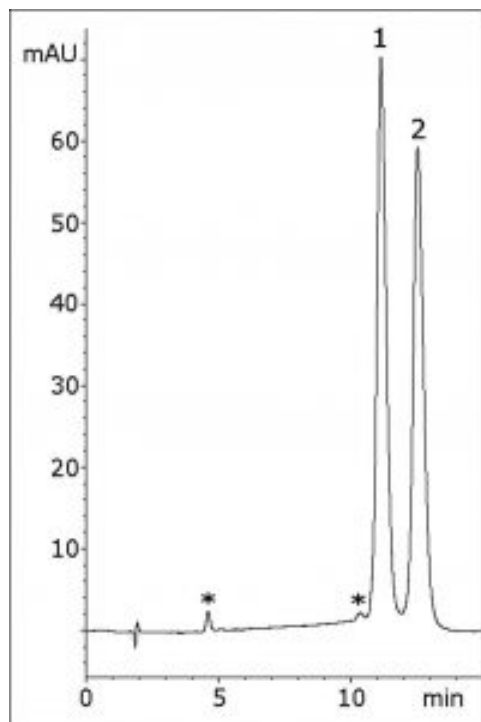


## Simple Isocratic Method for API and Main Impurity

Formulations of Doxycycline may contain a Methacycline Impurity. As such, it is crucial for analytical methods to be able to separate these two peaks. Using this simple isocratic Method, the baseline resolution is obtained for this pair.



### Peaks:

1. Methacycline
2. Doxycycline

\* Impurities in doxycycline standard

## Method Conditions

**Column:** Cogent UDC Cholesterol™, 4µm, 100Å

**Catalog No.:** 69069-15P

**Dimensions:** 4.6 x 150mm

### Mobile Phase:

**A:** 73% DI Water / 0.1% TFA

**B:** 27% Acetonitrile / 0.1% TFA

**Injection vol.:** 10 µL

**Flow rate:** 1.0mL / minute

**Detection:** UV @ 350nm

Printed from the Chrom Resource Center

Copyright 2024, All Rights Apply

**MicroSolv Technology Corporation**

9158 Industrial Blvd. NE, Leland, NC 28451

tel. (732) 380-8900, fax (910) 769-9435

Email: customers@mtc-usa.com

Website: www.mtc-usa.com

**Temperature:** 25°C

**Samples:** 1.0mg / mL stock Solutions of Doxycycline HCL and Methacycline HCL reference standards were prepared in a diluent of 50/50 Solvent A / Solvent B. 100µL of each solution was transferred to a new vial and diluted with 800µL diluent. Individual standard dilutions were also prepared for peak identity confirmation.

**t<sub>0</sub>:** 1.8 minutes

**Note:** Doxycycline is an antibiotic used for treatment of various bacterial infections such as Lyme disease, Rocky Mountain Spotted Fever, and others. Methacycline is a synthetic precursor to Doxycycline and therefore is a known impurity in Doxycycline formulations.



#### Attachment

**No 311 Doxycycline and Methacycline Analysis by HPLC pdf** 0.3 Mb

Printed from the Chrom Resource Center

Copyright 2024, All Rights Apply

**MicroSolv Technology Corporation**

9158 Industrial Blvd. NE, Leland, NC 28451

tel. (732) 380-8900, fax (910) 769-9435

Email: [customers@mtc-usa.com](mailto:customers@mtc-usa.com)

Website: [www.mtc-usa.com](http://www.mtc-usa.com)