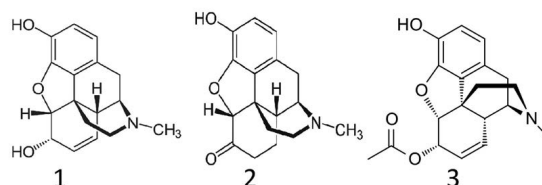
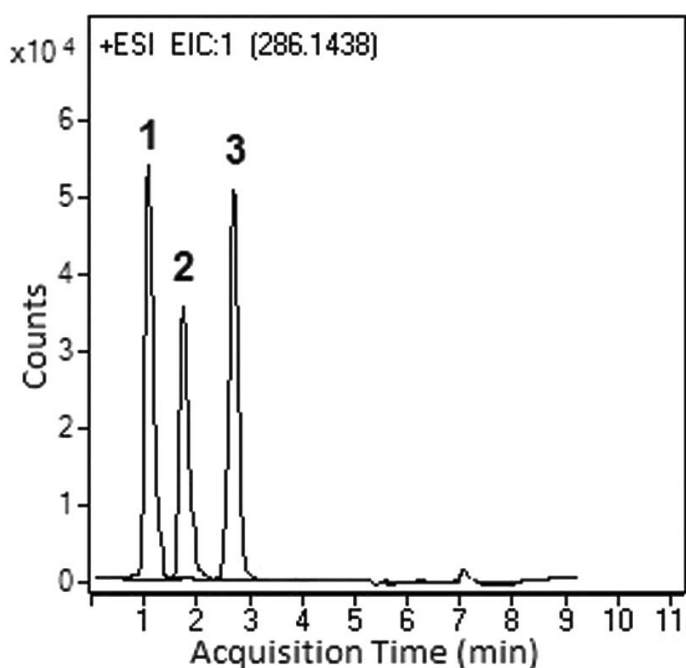


## Morphine, Hydromorphone and 6-MAM in Plasma Analyzed with LCMS - AppNote

### Morphine, Hydromorphone and 6-Monoacetylmorphine (6-MAM) in Plasma

This AppNote presents a Method that could be used for a routine analysis of Plasma Samples or (whole blood samples after changing the extraction procedure) for the presence of Morphine, Hydromorphone (isobaric compounds) or 6-MAM (an indicator of Heroin use).



#### Peaks:

1. Morphine 286.1438 m/z [M+H]<sup>+</sup>
2. Hydromorphone 286.1438 m/z [M+H]<sup>+</sup>
3. 6-Monoacetylmorphine (6-MAM) 328.1543 m/z [M+H]<sup>+</sup>

### Method Conditions

**Column:** Cogent Bidentate C18 2.0™, 2.2μm, 120Å

**Catalog No.:** 40218-05P-2

**Dimensions:** 2.1 x 50mm

**Mobile Phase:**

A: DI Water / 0.1% Formic Acid (v/v)

B: 50:50 Acetonitrile / Methanol / 0.1% Formic Acid (v/v)

**Gradient:**

Time (minutes)	%B
0	5
4	50
5	90
6	90

**Post Time:** 3 minutes

**Injection vol.:** 1µL

**Flow rate:** 0.4mL / minute

**Detection:** ESI - POS - Agilent 6210 MSD TOF Mass Spectrometer

**Sample Preparation:** To a spiked Plasma Sample (1mL), 1mL of an Ammonia solution (0.1% v/v) was added and vortex-mixed for 30 seconds to alkalize the Plasma. Then, the alkalized Plasma Sample was extracted with two 4mL Ethyl Acetate aliquots by vortex for 5 minutes, and centrifuged at 4000 rpm for 8 minutes at room temperature. The supernatant was separated and evaporated to dryness under a gentle stream of Nitrogen. The residue was reconstituted with 200µL Mobile Phase, and a 1µL aliquot of the reconstituted solution was injected into the LC-ESI-MS for analysis.

*Note: Morphine is used as an analgesic drug in the treatment of the severe pain. Hydromorphone, a semi-synthetic derivative of Morphine is used in cases of Morphine-resistant Cancer-related pain and 6-Monoacetylmorphine (6-MAM) is a specific indicator for Heroin use. All three drugs remain the selected substances in monitoring of drug abuse and addiction. Heroin use remains a serious public health issue which accounts for a substantial proportion of the health costs. Analysis of Plasma Samples for the presence of the three substances is essential in assessing short or long term exposure to the drugs.*



## Attachment

**No 310 Morphine, Hydromorphone and 6-MAM in Plasma Analyzed with LCMS pdf** 0.2 Mb [Download File](#)

Printed from the Chrom Resource Center

**MicroSolv Technology Corporation**

9158 Industrial Blvd. NE, Leland, NC 28451

tel. (732) 380-8900, fax (910) 769-9435

Email: [customers@mtc-usa.com](mailto:customers@mtc-usa.com)

Website: [www.mtc-usa.com](http://www.mtc-usa.com)

Date: 05-05-2024