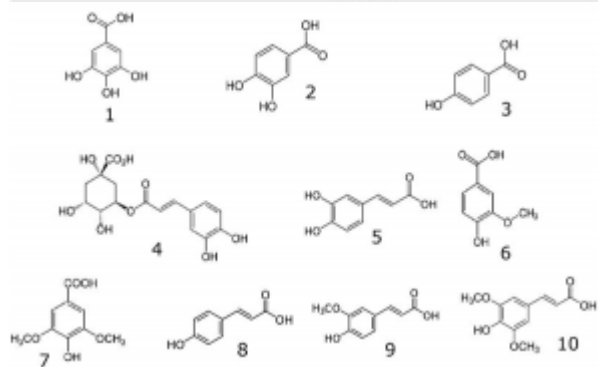
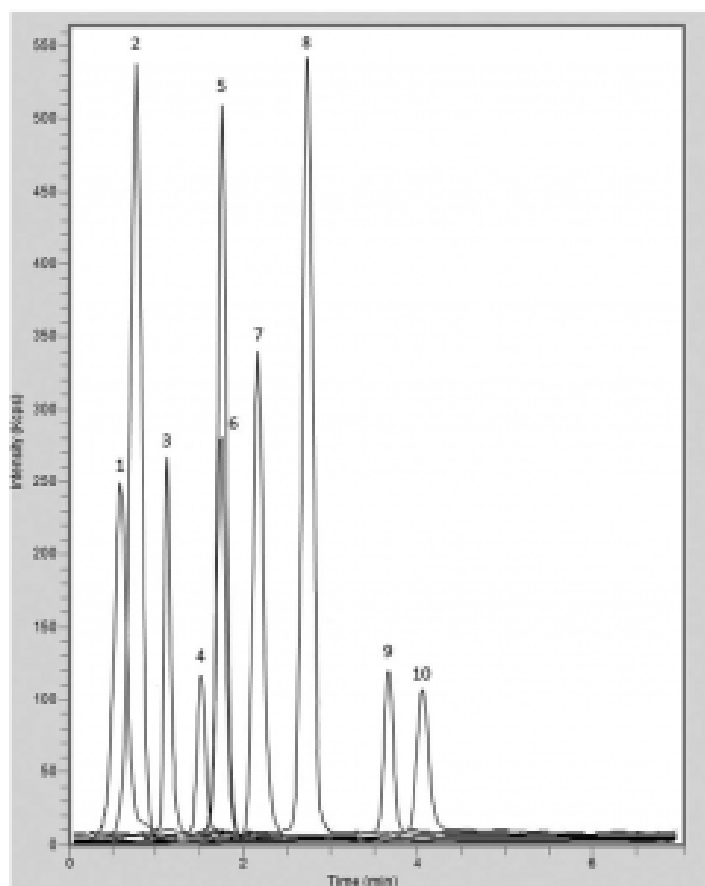


## 10 Phenolic Acids Analyzed with LCMS – AppNote

### Compounds Shown were Extracted from Commercial Rice.

Click [HERE](#) for Column Ordering Information.

Commercial Rice Extract 3 was spiked with ten standards and analyzed. The Cogent Phenyl Hydride Column was an excellent choice to use for analysis of Phenolic Compounds with Reversed Phase HPLC. The Retention and Separation of all nine available standards was possible using the Method below.



### Peaks:

1. Gallic Acid 169 m/z [M-H]<sup>-</sup>

Printed from the Chrom Resource Center

Copyright 2024, All Rights Apply

**MicroSolv Technology Corporation**

9158 Industrial Blvd. NE, Leland, NC 28451

tel. (732) 380-8900, fax (910) 769-9435

Email: [customers@mtc-usa.com](mailto:customers@mtc-usa.com)

Website: [www.mtc-usa.com](http://www.mtc-usa.com)

2. 3,4-Hydroxybenzoic Acid 153 m/z [M-H]-
3. 4-Hydroxybenzoic Acid 137 m/z [M-H]-
4. Chlorogenic Acid 353 m/z [M-H]-
5. Caffeic Acid 179 m/z [M-H]-
6. Vanillic Acid 167 m/z [M-H]-
7. Syringic Acid 197 m/z [M-H]-
8. p-Coumaric Acid 163 m/z [M-H]-
9. Ferulic Acid 193 m/z [M-H]-
10. 3,5-Dimethoxy-4-Hydroxycinnamic Acid 223 m/z [M-H]-

## Method Conditions

**Column:** Cogent Phenyl Hydride™, 4µm, 100Å

**Catalog No.:** 69020-05P-2

**Dimensions:** 2.1 x 50mm

**Mobile Phase:**

A: DI Water / 0.1% Formic Acid (v/v)

B: Acetonitrile / 0.1% Formic Acid (v/v)

**Gradient:**

Time (minutes)	%B
0	10
5	20
6	20
7	10

**Post Time:** 3 minutes

**Injection vol.:** 1µL

**Flow rate:** 0.4mL / minute

**Detection:** ESI - Neg - Perkin Elmer, Flexar SQ 300 Mass Spectrometer

**Sample Preparation:** Commercial Rice Extract 3 was spiked with standards @ 12.5ppm.

**t<sub>0</sub>:** 0.5 minutes

**Notes:** After the Separation Method was developed, several rice extracts were analyzed and compounds from the group of available standards were detected based on m/z values and Retention Time. Peaks for the two compounds Caffeic and Vanillic Acids were not Separated but since these compounds have very different m/z values, it was possible to determine their presence in a rice extract.

Printed from the Chrom Resource Center

Copyright 2024, All Rights Apply

**MicroSolv Technology Corporation**

9158 Industrial Blvd. NE, Leland, NC 28451

tel. (732) 380-8900, fax (910) 769-9435

Email: customers@mtc-usa.com

Website: www.mtc-usa.com



**Attachment**

**No 294 10 Phenolic Acids Analyzed with LCMS pdf** 0.3 Mb [Download File](#)

Printed from the Chrom Resource Center

Copyright 2024, All Rights Apply

**MicroSolv Technology Corporation**

9158 Industrial Blvd. NE, Leland, NC 28451

tel. (732) 380-8900, fax (910) 769-9435

Email: [customers@mtc-usa.com](mailto:customers@mtc-usa.com)

Website: [www.mtc-usa.com](http://www.mtc-usa.com)