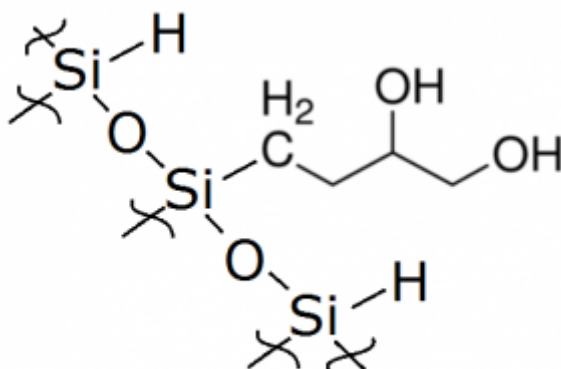


The Cogent Diol™ stationary phase structure has a single point direct silicon to carbon attachment to the silica as shown below.



Note this bonded phase is attached to the silica hydride surface and offers very unique retention mechanisms for both RP and ANP HPLC.



Printed from the Chrom Resource Center

Copyright 2024, All Rights Apply

MicroSolv Technology Corporation

9158 Industrial Blvd. NE, Leland, NC 28451

tel. (732) 380-8900, fax (910) 769-9435

Email: customers@mtc-usa.com

Website: www.mtc-usa.com