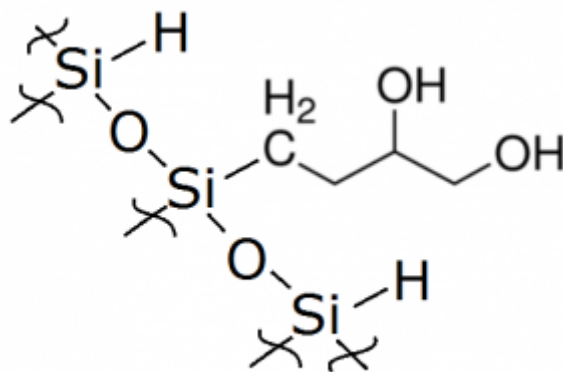


What is the chemical structure of the ligand in the Cogent DIOL HPLC stationary phase - FAQ

The Cogent Diol™ stationary phase structure has a single point direct silicon to carbon attachment to the silica as shown below.



Note this bonded phase is attached to the silica hydride surface and offers very unique retention mechanisms for both RP and ANP HPLC.



Printed from the Chrom Resource Center

MicroSolv Technology Corporation

9158 Industrial Blvd. NE, Leland, NC 28451

tel. (732) 380-8900, fax (910) 769-9435

Email: customers@mtc-usa.com

Website: www.mtc-usa.com

Date: 07-22-2024