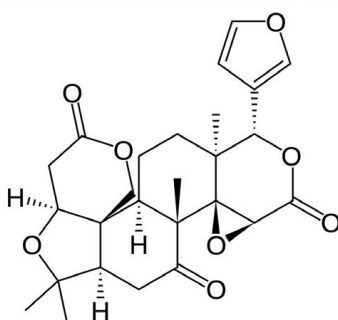
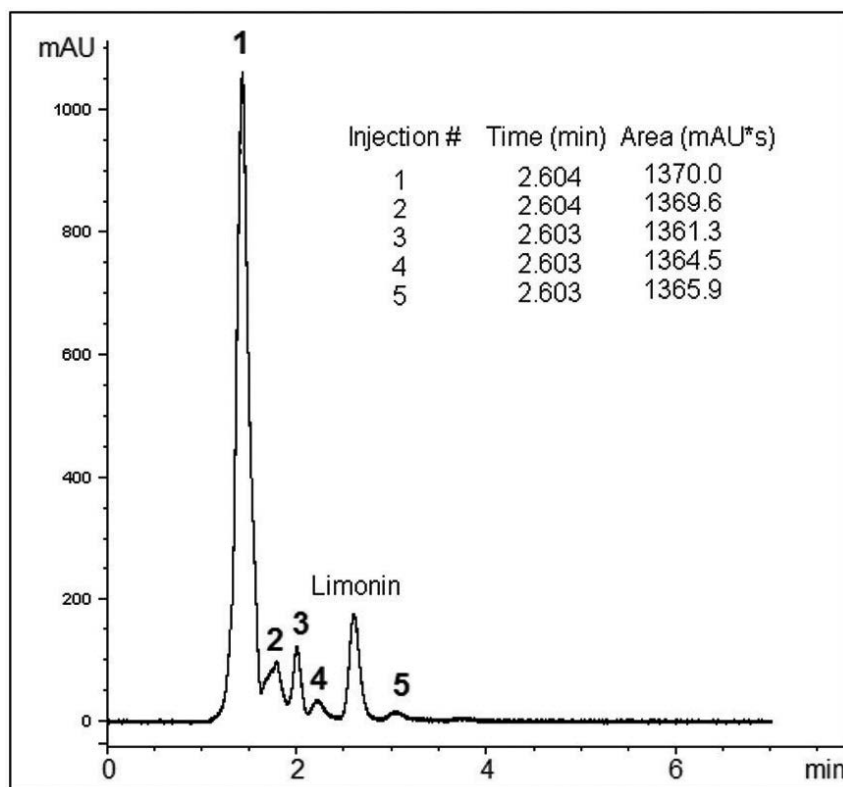


## Reproducible Separation from Sample Matrix Peaks

An Orange Juice Sample was spiked at the level of 250 ppm of Limonin and filtered (MicroSolv Tech Corp. 0.45µm Nylon Syringe Filter) before injection. Several Peaks from to the Juice Sample Matrix were separated (*peaks1-5*), the Limonin peak was well separated from the other Peaks and was easy to integrate. RSD for Peak areas was 0.271 and for Retention Times was 0.021 (*5 consecutive injections, shown in chromatogram are overlaid*). This Method is fast and is reproducible and could be used to monitor Limonin levels in the production of Juice.



### Peaks:

1-5 Orange Juice Matrix

Limonin

## Method Conditions

**Column:** Cogent UDC Cholesterol™, 4µm, 100Å

**Catalog No.:** 69069-7.5P

**Dimensions:** 4.6 x 75mm

**Mobile Phase:**

Printed from the Chrom Resource Center

Copyright 2024, All Rights Apply

**MicroSolv Technology Corporation**

9158 Industrial Blvd. NE, Leland, NC 28451

tel. (732) 380-8900, fax (910) 769-9435

Email: customers@mtc-usa.com

Website: www.mtc-usa.com

40% A: DI Water with 0.1% Formic Acid (v/v)

60% B: Acetonitrile with 0.1% Formic Acid (v/v)

**Injection vol.:** 1µL

**Flow rate:** 0.5mL / minute

**Detection:** UV @ 220nm

**Temperature:** 25°C

**Sample Preparation:** 500ppm Limonin standard in 20:40:40 DI Water with 0.1% Formic Acid / Acetonitrile / Methanol was prepared. The Orange Juice was filtered and injected "as is" without an additional preparation (*data not shown*). The Orange Juice was spiked with 250ppm Limonin, filtered, and injected.

**t<sub>0</sub>:** 0.9 minutes

**Note:** Limonin is a bitter compound which may negatively affect juice quality. The compound is found in the seeds and membrane tissue of the fruit. It is very important for groves to determine the level of Limonin in juice so the correct recovery settings for the juice production can be set. The level of Limonin can change dramatically from season to season. It also depends on the fruit size. The analysis of Limonin is crucial in production of high quality non-bitter fruit juices.



#### Attachment

**No 282 Limonin in Orange Juice Analyzed with HPLC pdf** 0.3 Mb [Download File](#)

Printed from the Chrom Resource Center

Copyright 2024, All Rights Apply

**MicroSolv Technology Corporation**

9158 Industrial Blvd. NE, Leland, NC 28451

tel. (732) 380-8900, fax (910) 769-9435

Email: [customers@mtc-usa.com](mailto:customers@mtc-usa.com)

Website: [www.mtc-usa.com](http://www.mtc-usa.com)