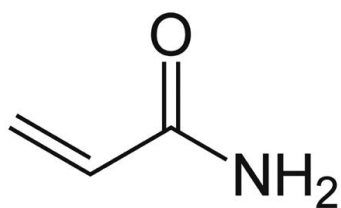
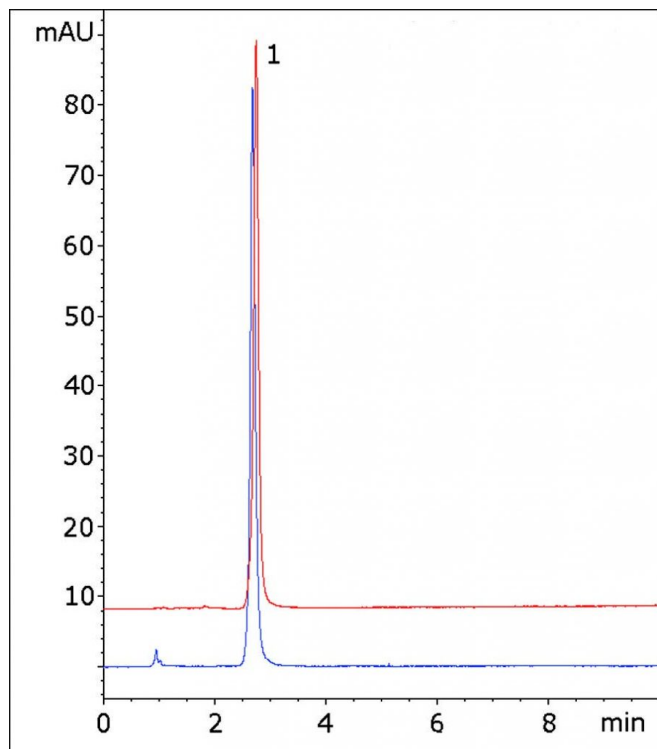


Acrylamide HPLC Analyzed with HPLC – AppNote

Easy & Precise Retention of a Very Polar Compound

Acrylamide can be difficult to retain with conventional Reversed Phase Methods due to its polar nature. With this Method however, Retention is readily achievable using a simple, Isocratic Mobile Phase. The overlay of two Chromatograms using two different lots of HPLC Columns in the *Figure* below illustrates the Reproducibility and Robustness of this Method.



Peak:

Acrylamide

Method Conditions

Column: Cogent Diamond Hydride™, 4µm, 100Å

Catalog No.: 70000-7.5P

Dimensions: 4.6 x 75mm

Mobile Phase: Acetonitrile with 0.1% Formic Acid

Injection vol.: 1µL

Flow rate: 1.0mL / minute

Detection: UV @ 205nm

Sample Preparation: 0.1mg / mL Acrylamide in Mobile Phase as the Diluent.

t₀: 1.0 minute

Note: Acrylamide is a monomer used to synthesize polyacrylamides. It was reported to be present in certain food products in 2002. This has been cause for concern as the monomer form is a known carcinogen and neurotoxin. As such, quantitation of this analyte is of importance in a variety of fields.



Attachment

No 199 Acrylamide Analyzed with HPLC pdf 0.3 Mb [Download File](#)

Printed from the Chrom Resource Center

MicroSolv Technology Corporation

9158 Industrial Blvd. NE, Leland, NC 28451

tel. (732) 380-8900, fax (910) 769-9435

Email: customers@mtc-usa.com

Website: www.mtc-usa.com

Date: 05-09-2024