

Different solvent selectivity mechanism with HPLC – AppNote

Polarity or Shape Recognition

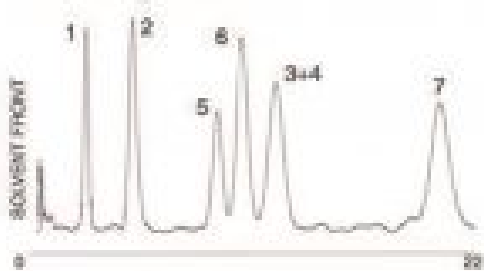
An FDA requirement for Birth Control Product Analysis is the resolution of hormonal steroids ETES and ESTN. In this Method, Peaks ETES and ESTN are resolved with Polarity-based, Reversed Phase, ACN as the organic. When eluting with the shape Recognition in Methanol, ETES and ESTN are extremely well. However, in this test mix ETES now co-elutes with ESTD.

By mixing the Selectivity mechanisms, Polarity (ACN) and shape Recognition (MeOH), partial resolution was achieved on all compounds using the UDC Cholesterol Column in this Method. Scaling up to a 250 x 4.6mm Column resulted in baseline resolution of all Peaks.

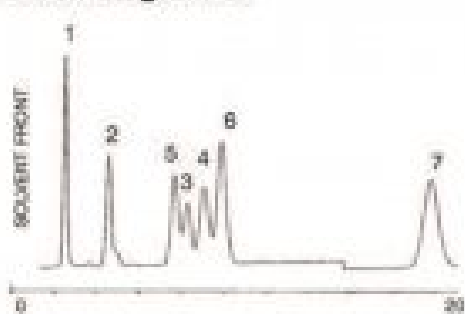
Chromatogram A:



Chromatogram B:



Chromatogram C:



Peaks:

1. Prednisolone
2. Corticosterone

3. Estradiol
4. Ethinyl Estradiol
5. Estrone
6. Norgesterel
7. Progesterone

Method Conditions

Column: Cogent UDC-Cholesterol™, 4µm, 100Å

Catalog No.: 69069-75P

Dimensions: 4.6 x 75mm

Mobile Phase:

- A. 60% Aqueous (0.1% Trifluoroacetic Acid TFA) / 40% Acetonitrile (ACN)
- B. 45% Aqueous (0.1% Trifluoroacetic Acid TFA) / 55% MeOH
- C. 56% Aqueous (0.1% Trifluoroacetic Acid TFA) / 24% MeOH and 20% ACN

Flow rate: 1mL / minute

Detection: UV @ 240nm

Notes: Using a single UDC Cholesterol Column with orthogonal selectivity, polarity in ACN and shape recognition in Methanol can lead to unique problem solving.



Attachments

No 18 Different Solvent Selectivity Mechanism with HPLC pdf [Download File](#)