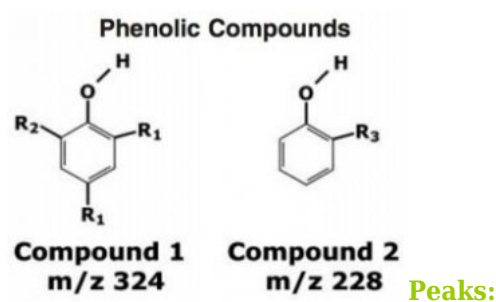
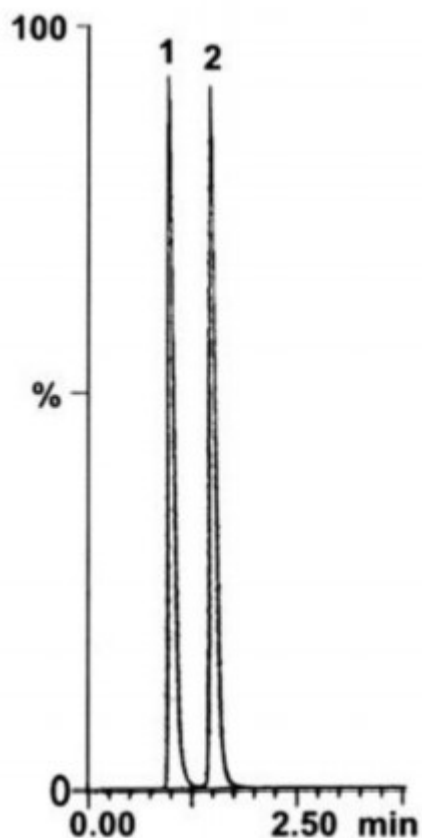


## Separation by Functional Groups

Two proprietary compounds, which are precursors for a catalyst or Prodrugs are analyzed using a C18 Column under Normal Phase conditions. Separation of the two compounds is extremely reproducible (%RSD 0.1) and is very easy. The amount of moisture in your Mobile Phase is not an issue with this Method.



1. Compound 1
2. Compound 2

## Method Conditions

**Column:** Cogent Bidentate C18™, 4μm, 100Å

**Catalog No.:** 40018-75P

**Dimensions:** 4.6 x 75mm

**Mobile Phase:** 95% Hexane / 5% Ethyl Acetate

**Injection vol.:** 1μL

**Flow rate:** 1mL / minute

Printed from the Chrom Resource Center

Copyright 2024, All Rights Apply

**MicroSolv Technology Corporation**

9158 Industrial Blvd. NE, Leland, NC 28451

tel. (732) 380-8900, fax (910) 769-9435

Email: customers@mtc-usa.com

Website: www.mtc-usa.com

**Detection:** Mass Spectrometer - Atmospheric Pressure Chemical Ionization in positive mode: APCI+ Single Ion Monitoring

**Sample Preparation:** 1mg / mL of proprietary compound. 1 (m/z 324) and 2 (m/z 228) dissolved in the Mobile Phase.

**Notes:** Because silanols on the Silica surface are substituted with Si-H, Water is not retained by the Stationary Phase, so drying of all the Solvents is not essential and analyses are very reproducible.



#### Attachment

**No 23 Substituted Phenols Analyzed with HPLC pdf** 0.2 Mb [Download File](#)

Printed from the Chrom Resource Center

Copyright 2024, All Rights Apply

**MicroSolv Technology Corporation**

9158 Industrial Blvd. NE, Leland, NC 28451

tel. (732) 380-8900, fax (910) 769-9435

Email: [customers@mtc-usa.com](mailto:customers@mtc-usa.com)

Website: [www.mtc-usa.com](http://www.mtc-usa.com)