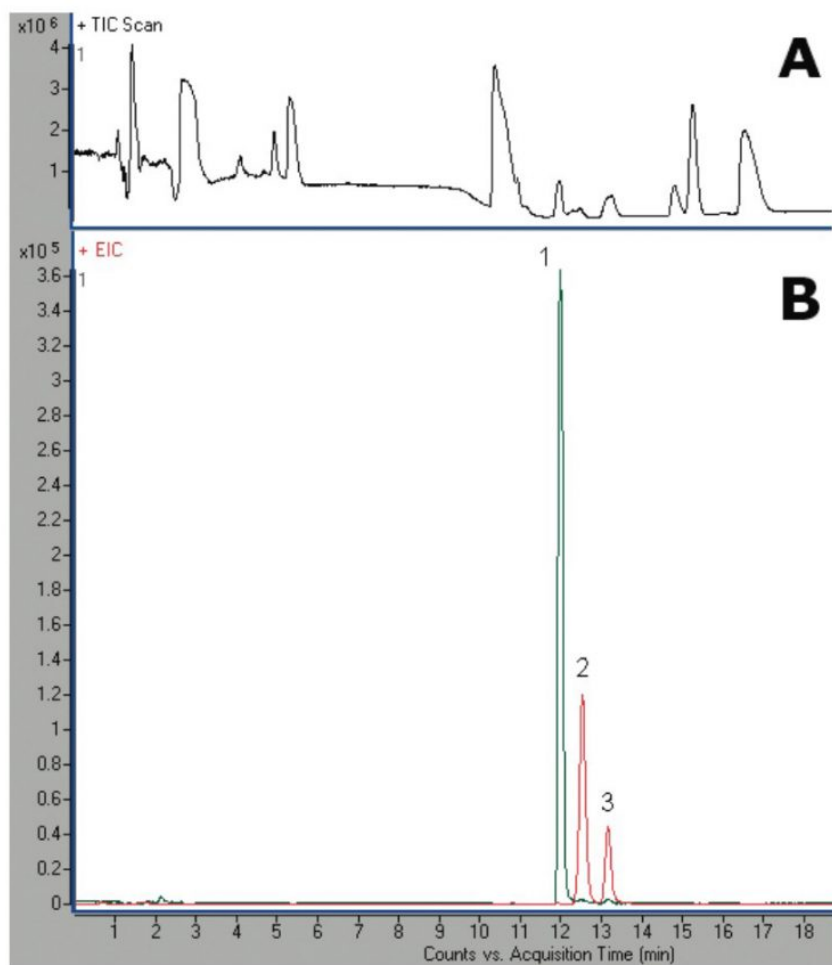


Monitor Important Molecules Found in Urine

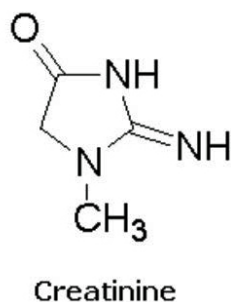
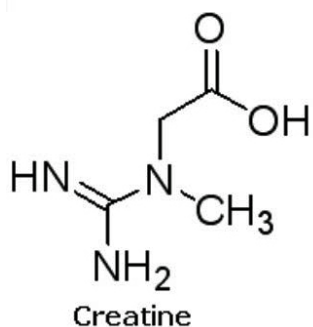
Creatine and Creatinine can be very difficult to Separate from each other. A simple Gradient with an MS friendly Mobile Phase was used to resolve these two compounds. In addition 4-Hydroxyproline which has a very similar mass weight as Creatine was also easily Separated.

This Method takes away guessing from the analysis of metabolites in a complex mixture as shown.



A- TIC – Total ion chromatogram of synthetic urine sample

B- EIC – Extracted ion chromatogram of selected compounds (1,2,3)



Peaks:

Printed from the Chrom Resource Center

Copyright 2024, All Rights Apply

MicroSolv Technology Corporation

9158 Industrial Blvd. NE, Leland, NC 28451

tel. (732) 380-8900, fax (910) 769-9435

Email: customers@mtc-usa.com

Website: www.mtc-usa.com

1. Creatinine (Cr) 114.0662 [M+H]⁺, RT = 11.98 min
2. Creatine (Cm) 132.0768 [M+H]⁺, RT = 12.52 min
3. 4-Hydroxyproline 132.0655 [M+H]⁺, RT = 13.16 min

Method Conditions

Column: Cogent Diamond Hydride™, 4µm, 100Å

Catalog No.: 70000-7.5P

Dimensions: 4.6 x 75mm

Mobile Phase:

A: DI Water / 0.1% Formic Acid

B: Acetonitrile / 0.1% Formic Acid

Gradient:

Time (minutes)	%B
0	95
0.2	95
30	50
35	50
35.1	95
40	95

Flow rate: 0.4mL / minute

Detection: ESI - pos - Agilent 6210 MSD TOF Mass Spectrometer

Sample Preparation: Synthetic Urine

Notes: Cr is a compound that is made primarily in the liver and then transported to muscles where it is used as an energy source. Once in the muscle, some of the Cr is spontaneously converted to Cm. It is important to monitor the Cr / Cm ratio. An increased ratio may be due to several diseases: congestive heart failure or dehydration. It may also be seen with gastrointestinal bleeding, or increased protein in the diet. The ratio may be decreased with liver disease (due to decrease in the formation of urea) and malnutrition. Cr and Cr analogs such as cyclocreatine were found to have antitumor, antiviral, and antidiabetic effects and to protect tissues from hypoxic, ischemic, neurodegenerative, or muscle damage.



Attachment

Creatine, Creatinine & Hydroxyproline Metabolites Analyzed with LCMS 0.2 M Copy Right 2024, All Rights Apply

MicroSolv Technology Corporation
9158 Industrial Blvd. NE, Leland, NC 28451
tel. (732) 380-8900, fax (910) 769-9435
Email: customers@mtc-usa.com
Website: www.mtc-usa.com

Printed from the Chrom Resource Center