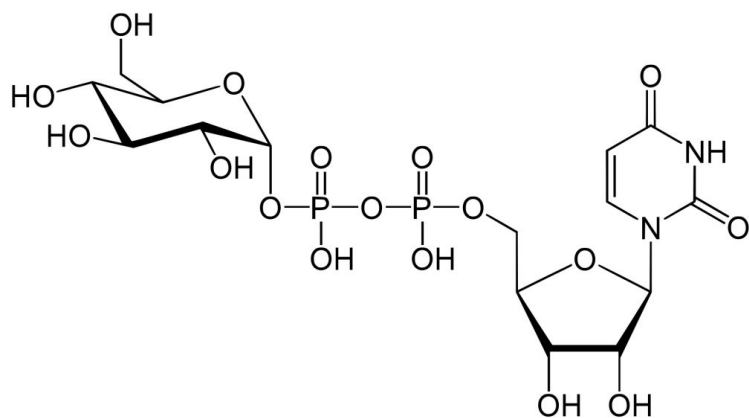
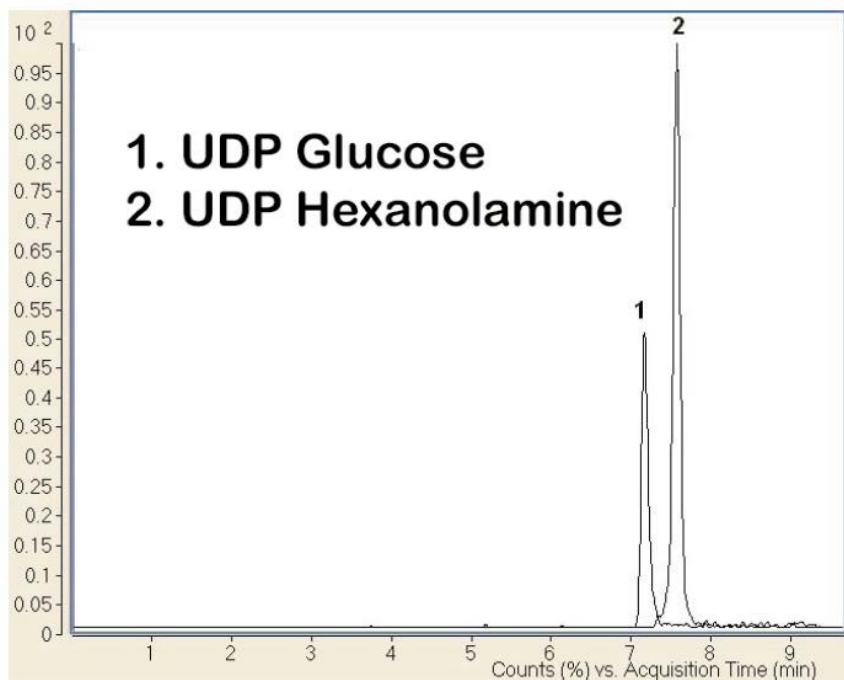


UDP-Glucose Analyzed with LCMS – AppNote

Analyzing a Nucleotide Sugar with UDP-Hexanolamine as an Internal Standard

This Method is rapid and simple and it can also be used in measuring UDP Glucose. The advantages of using this Method to assay Nucleotide Sugars such as this one are the short Separation Time, long term Column Stability and rapid Equilibration time between a Gradient runs resulting in more throughput.

This Method can also be used to quantify UDP-Glc, an important metabolic intermediate and the substrate of enzymes catalyzing glycosylation reactions. Thus several enzymes producing UDP-Glc can be directly Analyzed using this Method with slight modifications.



Uridine 5'-diphosphate-glucose

Peaks:

1. UDP-Glucose

2. UDP-Hexanolamine

Method Conditions

Column: Cogent Diamond Hydride™, 4µm, 100Å

Catalog No.: 70000-15P-2

Dimensions: 2.1 x 150mm

Mobile Phase:

A: DI Water / 0.1% Ammonium Formate (pH 7.2)

B: 90% Acetonitrile / 10% DI Water / 0.1% Ammonium Formate (pH 6)

Gradient:

| Time (minutes) | %B |
|----------------|-----|
| 0 | 100 |
| 3 | 95 |
| 6 | 70 |
| 7 | 70 |
| 8 | 50 |
| 9 | 50 |

Post Time: 5 minutes

Flow rate: 300µL / minute

Detection: ESI - neg - Agilent 6410 Triple Quadrupole LCMS/MS

Mass Data:

1. UDP-Glucose - the monitored MRM transitions were m/z 565 to m/z 323
2. UDP-Hexanolamine (*internal standard*) - the monitored MRM transitions were m/z 502 to m/z 258

Notes: Activated nucleotide sugars, such as UDP-glucose (UDP-Glc) are donor substrates of glycosyltransferases involved in protein glycosylation processes. Therefore, their availability can influence the glycosylation of proteins.



Attachment

No 62 UDP-Glucose Analyzed with LCMS pdf 0.3 Mb [Download File](#)

Printed from the Chrom Resource Center

MicroSolv Technology Corporation

9158 Industrial Blvd. NE, Leland, NC 28451

tel. (732) 380-8900, fax (910) 769-9435

Email: customers@mtc-usa.com

Website: www.mtc-usa.com

Date: 03-05-2024