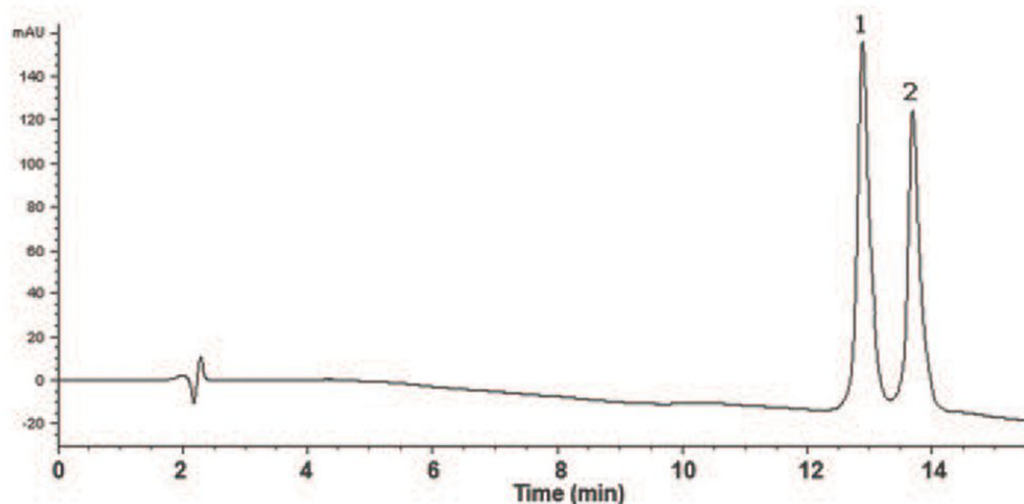


Cytochrome C Analyzed by HPLC - AppNote

From Horse and Bovine Heart

Using the simple Reversed Phase HPLC Gradient Method shown in this note, it was possible to separate Horse and Bovine heart Cytochrome C. The Peaks were well separated and symmetrical. A linear detector response was observed over 2 orders of magnitude.



Peaks:

1. Cytochrome C from Horse heart
2. Cytochrome C from Bovine heart

Method Conditions

Column: Cogent Bidentate C8 300™, 5µm, 300Å

Catalog No.: 40008-75P-3M

Dimensions: 4.6 x 75mm

Mobile Phase:

A: DI Water / 0.1% Trifluoroacetic Acid (TFA)

B: Acetonitrile / 0.1% Trifluoroacetic Acid (TFA)

Gradient:

Time (minutes)	%B
0	20
16	40
18	40
18.1	20

Post Time: 5 minutes

Flow rate: 0.5mL / minute

Detection: UV @ 214nm

Notes: Cytochrome C is used in the study of protein stability, folding, unfolding and molecular evolution. This protein is an efficient biological electron-transporter and is a universal catalyst of respiration.



Attachment

No 92 Cytochrome C Analyzed by HPLC pdf 0.1 Mb [Download File](#)

Printed from the Chrom Resource Center

MicroSolv Technology Corporation

9158 Industrial Blvd. NE, Leland, NC 28451

tel. (732) 380-8900, fax (910) 769-9435

Email: customers@mtc-usa.com

Website: www.mtc-usa.com

Date: 07-22-2024