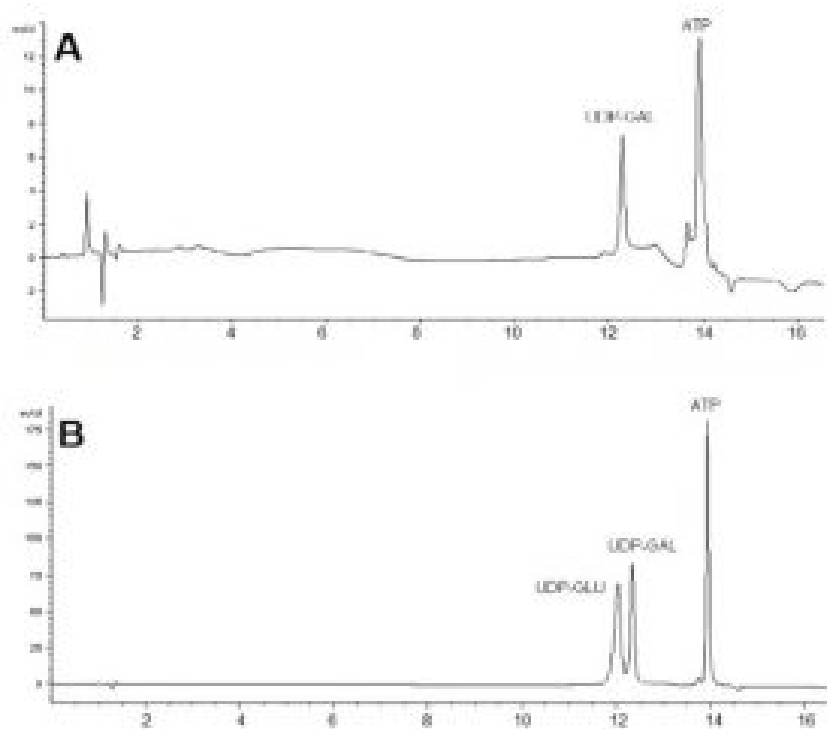


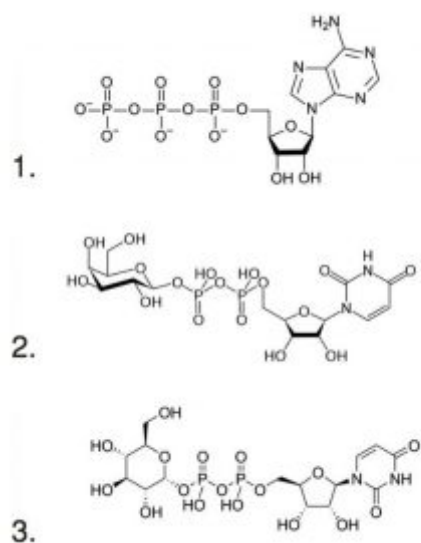
ATP, UDP-Glucose UDP-Galactose Separation from Red Blood Cells – AppNote

Separation of Nucleotides

In this application, we present an easy-to-use protocol for sensitive detection and quantification of nucleotides in red blood cell extracts. Retention times were very reproducible with %RSD around 0.4. The desired separation between UDP-Glu and UDP-Gal was achieved, all other nucleotides eluted later and did not interfere with the analysis. ATP represents the most abundant nucleotide in the red blood cell extracts and in this example it eluted after both analytes.

Figure A: Sample (spiked with UDP-Galactose) of a red blood cell extract from a patient for monitoring, Figure B: Standards using the same method.





Peaks:

1. UDP GLU: UDP-Glucose: Uridine 5'-Diphosphateglucose, 1 mg/mL
2. UDP-GAL: UDP-Galactose: Uridine 5'-Diphosphategalactose, 1 mg/mL
3. ATP: Adenosine 5'-Triphosphate, 1 mM

Method Conditions

Column: Cogent Diamond Hydride™, 4µm, 100Å

Catalog No.: 70000-15P-2

Dimensions: 2.1mm x 150 mm

Mobile Phase:

A: DI Water / 13mM Ammonium Acetate

B: 90% Acetonitrile / 10% DI Water / 13mM Ammonium Acetate

Time (minutes)	%B
0	100
1	95
8	95
9	80
10.5	80
14	50
15	100

Post Time: 5 minutes

Injection vol.: 1 µL

Flow rate: 0.4 mL / minute

Detection: UV @ 254nm

Notes: Even with UV detection it is possible to detect individual nucleotides in the presence of a biological matrix. The retention time can be compared to the standard (Figure B) showing that the values of the real sample and the

standard are very close. UDP-glucose, UDP-galactose and galactose 1-phosphate determination can be used for diagnosis of galactosemia in newborn babies [1-2].

1. Ji-Seon Jeong, Hye-Ran Yoon, Seon-Pyo Hong, Development of a new diagnostic method for galactosemia by high-performance anion-exchange chromatography with pulsed amperometric detection, J. Chromatography A, 1140 (2007) 157-162. 2. M.T. Matyska, J.J. Pesek, J. Duley, M. Zamzami, S.M. Fischer, Aqueous NormalPhase retention of nucleotides on silica hydride-based column: Method development strategies for analytes relevant in clinical analysis, J. Sep. Sci. 33 (2010) 930-938



Attachment

ATP, UDP-Glucose UDP-Galactose Separation from Red Blood Cells- pdf 0.2 Mb [Download File](#)

Printed from the Chrom Resource Center

MicroSolv Technology Corporation

9158 Industrial Blvd. NE, Leland, NC 28451

tel. (732) 380-8900, fax (910) 769-9435

Email: customers@mtc-usa.com

Website: www.mtc-usa.com

Date: 05-18-2024