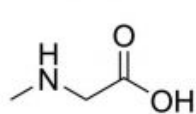
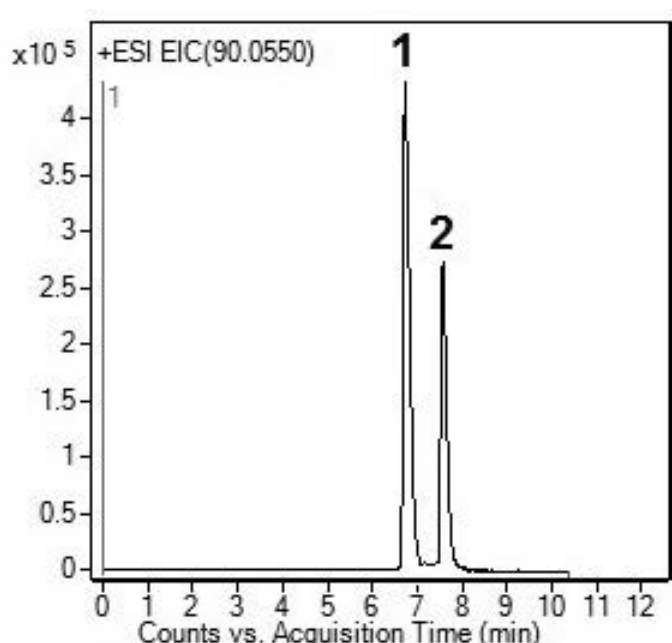


Sarcosine Analyzed with LCMS – AppNote

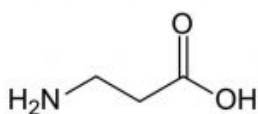
Separation of Potential Urine Biomarker from Isobaric β -Alanine

This developed LCMS method can separate Sarcosine from Beta- Alanine in serum and urine samples without using labor intensive sample derivatization. Since Sarcosine is considered a potential biomarker for prostate cancer risk and aggressiveness, it is essential to resolve and accurately quantify this compound in the presence of isobaric (same m/z) Beta-Alanine.

The developed method is Sensitive, Specific, Quantitative, and Reproducible ($\%RSD = 0.1$). It can be used in large scale studies with numerous samples (high throughput of the method due to simple sample preparation).



1. Sarcosine



2. β -Alanine

Peaks:

1. Sarcosine
2. β -Alanine

Method Conditions

Column: Cogent Diamond Hydride™, 4 μ m, 100Å

Catalog No.: 70000-15P-2

Dimensions: 2.1 x 15mm

Mobile Phase:

A: 50% Isopropyl Alcohol / 50% DI Water / 0.1% Acetic Acid

B: 97% Acetonitrile / 3% DI Water / 0.1% Acetic Acid

Gradient:

Time (minutes)	%B
0	75
3	75
4	65
5	65
10	20
12	75

Temperature: 50°C**Post Time:** 5 minutes**Flow rate:** 0.6mL / minute**Detection:** ESI – POS – Agilent 6210 MSD TOF Mass Spectrometer**Injection vol.:** 1µL**Sample Preparation:** 10mg / L each of Sarcosine and Beta-Alanine in 50:50 A:B

Note: When Reversed Phase Columns were evaluated for their ability to separate Sarcosine from Beta-Alanine, both compounds eluted at the solvent front and were not separated. To achieve separation, a very intensive sample preparation has to be employed (e.g. derivatization) when using RP methods.

**Attachment****No 129 Sarcosine Analyzed with LCMS pdf** 0.2 Mb [Download File](#)

Printed from the Chrom Resource Center

MicroSolv Technology Corporation

9158 Industrial Blvd. NE, Leland, NC 28451

tel. (732) 380-8900, fax (910) 769-9435

Email: customers@mtc-usa.comWebsite: www.mtc-usa.com

Date: 06-05-2024