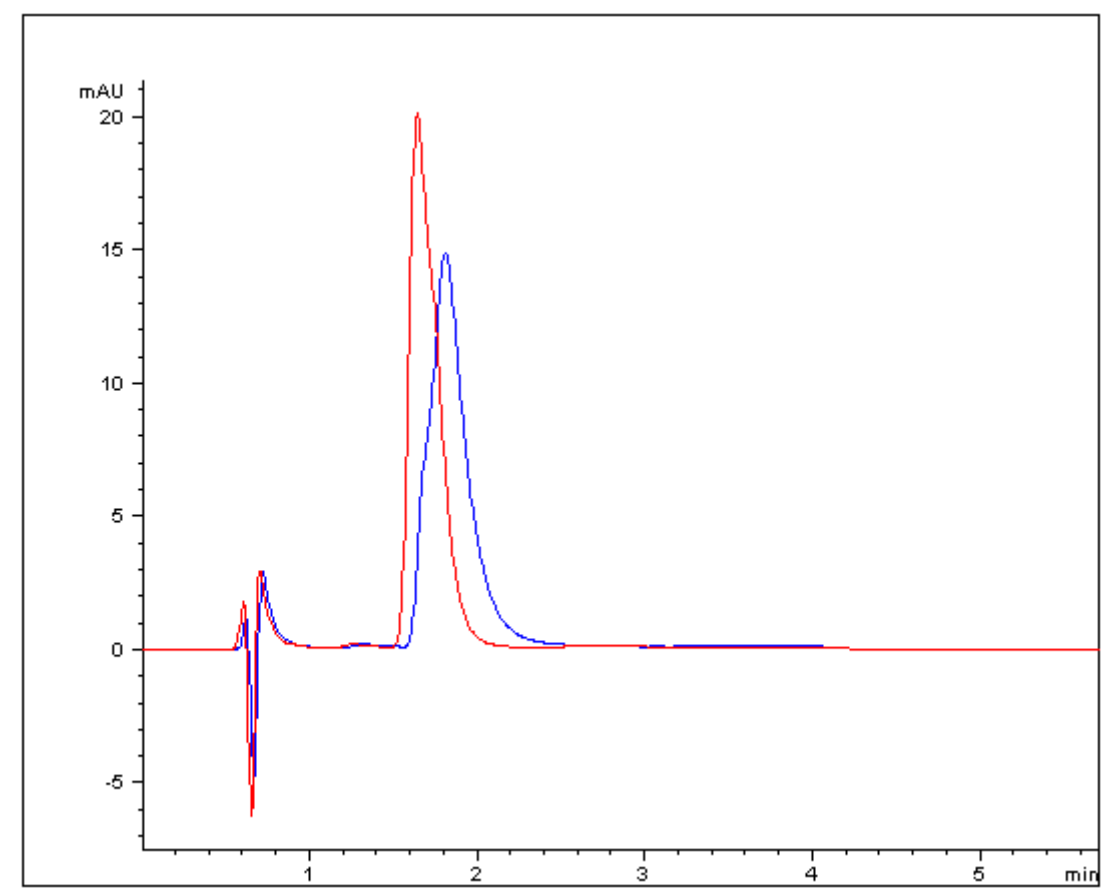


# Improved peak shape of $\alpha$ -ketoglutaric acid analyzed by HPLC- AppNote

## Separation of a key component in the Krebs Cycle with improved peak shape using a metal free coated stainless-steel column

As  $\alpha$ -ketoglutarate is one of the most important nitrogen transporters in metabolic pathways, it is of particular value to quantify all metabolic analytes and maintain data integrity. This compound interacts with stainless steel and is known to have substandard peak shapes in HPLC.

This data below highlights important chromatographic performance improvements between a hydrophobic, metal free coated stainless steel HPLC column and an untreated stainless-steel column with the same packing material and method conditions on the same instrument. Metal free surface treatments are available on all Cogent HPLC columns.



**Peak:**  
 $\alpha$ -Ketoglutaric acid

Trace	Hardware	Width (Minutes)	Plates (N)
Red	Metal Free Coated	0.1833	436

Blue

Stainless Steel

0.2533

279

## Method Conditions:

**Column:** Cogent Diamond Hydride™, 4μm, 100Å

**Catalog No.:** 70000-10D-2

70000-10P-2

**Dimensions of both columns:** 2.1mm x 100mm

### Mobile Phase:

**A:** DI / 10mM ammonium formate (0.5% formic acid)

**B:** 95/5 acetonitrile / 10mM ammonium formate

**Injection vol.:** 2μL

**Flow rate:** 0.3mL / minute

**Detection:** 254nm

**Sample Preparation:** α-ketoglutarate 1mg / mL in DI water

*Note: α-ketoglutaric acid is one of two ketone derivatives of glutaric acid. The term "ketoglutaric acid," when not further qualified, almost always refers to the alpha variant. β-ketoglutaric acid varies only by the position of the Ketone functional group and is much less common.*



Printed from the Chrom Resource Center

**MicroSolv Technology Corporation**

9158 Industrial Blvd. NE, Leland, NC 28451

tel. (732) 380-8900, fax (910) 769-9435

Email: [customers@mtc-usa.com](mailto:customers@mtc-usa.com)

Website: [www.mtc-usa.com](http://www.mtc-usa.com)

Date: 05-19-2024