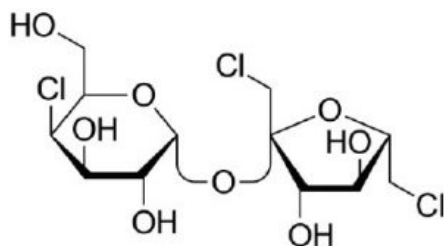
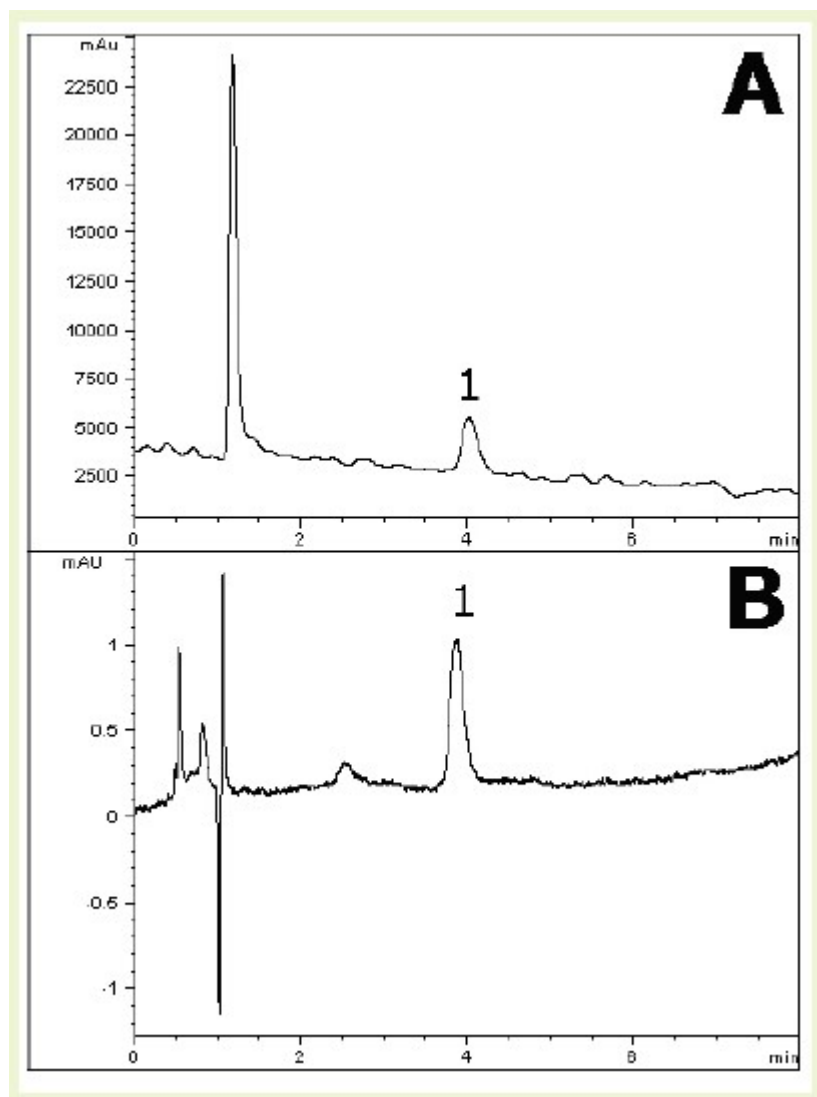


## Sucralose – AppNote

### Common Artificial Sweetener

Sucralose does not exhibit significant UV absorption, hence detection of this analyte may be suited to Refractive Index (RI) as an alternative. Both approaches are shown in this application note, where UV and RI detector modules were attached in series. The relatively high concentration used in this example allowed for adequate detection in either case. These conditions were adapted from the USP assay method. A slight modification in the Water content was made to obtain higher retention.



Printed from the Chrom Resource Center

Copyright 2024, All Rights Apply

**MicroSolv Technology Corporation**

9158 Industrial Blvd. NE, Leland, NC 28451

tel. (732) 380-8900, fax (910) 769-9435

Email: [customers@mtc-usa.com](mailto:customers@mtc-usa.com)

Website: [www.mtc-usa.com](http://www.mtc-usa.com)

**Peak:**

Sucralose

**Method Conditions**

**Column:** Cogent Bidentate C18™, 4µm, 1 00Å

**Catalog No.:** 40018-75P

**Dimensions:** 4.6 x 50 mm

**Mobile Phase:** 90% DI Water / 10% Acetonitrile (v/v)

**Injection vol.:** 2µL

**Flow rate:** 1.0 mL/minute

**Detection:**

Fig. A: Refractive Index

Fig. B: UV 200 nm

**Sample:** 5.0 mg/mL Sucralose reference standard in diluent of 85% DI Water / 15% Acetonitrile.

**t<sub>0</sub>:** 1.0 minute

**Note:** The discovery of Sucralose is quite serendipitous. Researcher Shashikant Phadnis was asked by his adviser Leslie Hough to “test” a particular chlorinated sugar compound they had been studying. However, Phadnis misheard him and thought he was being asked to “taste” it instead! Upon doing so, he found it to be much sweeter than ordinary table sugar.

**Attachment**

No 361 Sucralose.pdf 0.2 Mb [Download File](#)

Printed from the Chrom Resource Center

Copyright 2024, All Rights Apply

**MicroSolv Technology Corporation**

9158 Industrial Blvd. NE, Leland, NC 28451

tel. (732) 380-8900, fax (910) 769-9435

Email: [customers@mtc-usa.com](mailto:customers@mtc-usa.com)

Website: [www.mtc-usa.com](http://www.mtc-usa.com)