

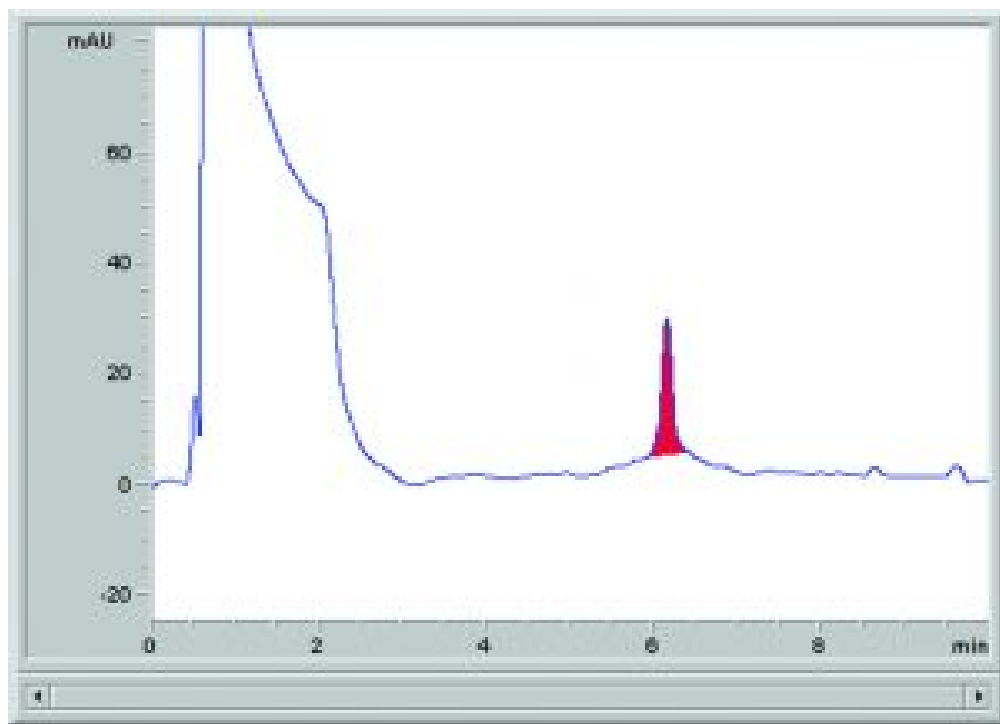
## L-Theanine in Green Tea Analyzed with HPLC – Extended AppNote

### L-Theanine in Green Tea

L-Theanine does not have significant UV absorption, but detection at a low wavelength (200 nm) was found to be suitable. With an expected sample concentration of around 10ppm, a calibration curve in the range 2-200 ppm would be appropriate.

The data showed good linearity in the studied range, with a line of best fit of  $y = 12.32x - 7.643$  and an  $r^2$  value of 0.99995.

**Click below to download full Method Conditions**



#### Attachment

**L-Theanine in Green Tea Analyzed with HPLC pdf** 0.3 Mb [Download File](#)

Printed from the Chrom Resource Center

Copyright 2024, All Rights Apply

**MicroSolv Technology Corporation**

9158 Industrial Blvd. NE, Leland, NC 28451

tel. (732) 380-8900, fax (910) 769-9435

Email: [customers@mtc-usa.com](mailto:customers@mtc-usa.com)

Website: [www.mtc-usa.com](http://www.mtc-usa.com)