

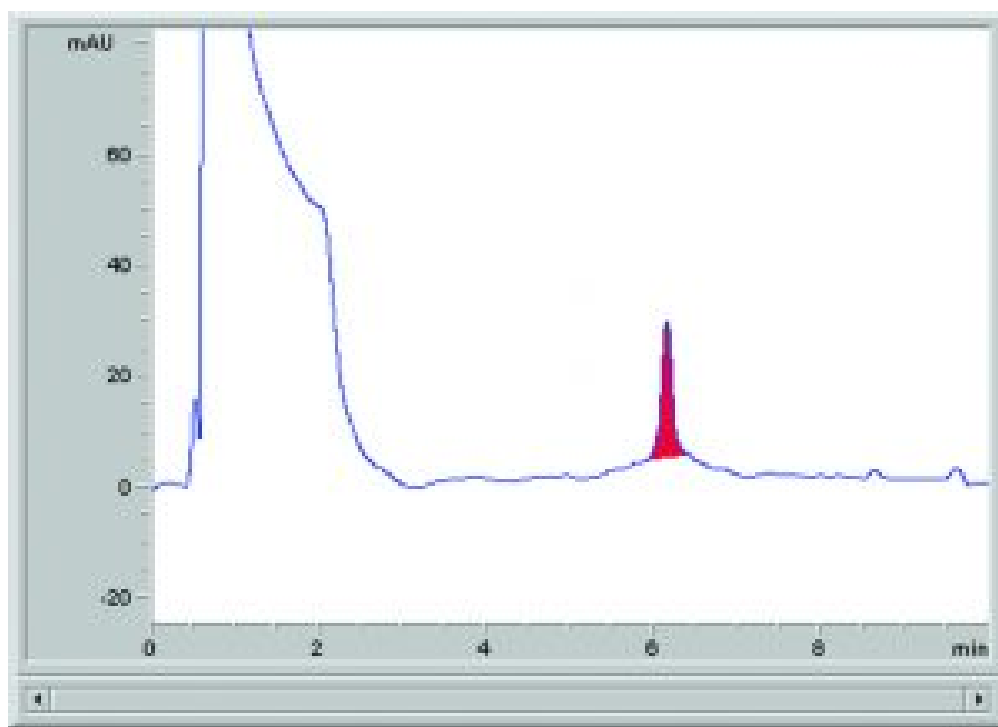
L-Theanine in Green Tea Analyzed with HPLC – Extended AppNote

L-Theanine in Green Tea

L-Theanine does not have significant UV absorption, but detection at a low wavelength (200 nm) was found to be suitable. With an expected sample concentration of around 10ppm, a calibration curve in the range 2-200 ppm would be appropriate.

The data showed good linearity in the studied range, with a line of best fit of $y = 12.32x - 7.643$ and an r^2 value of 0.99995.

Click below to download full Method Conditions



Attachment

L-Theanine in Green Tea Analyzed with HPLC pdf 0.3 Mb [Download File](#)

MicroSolv Technology Corporation

9158 Industrial Blvd. NE, Leland, NC 28451

tel. (732) 380-8900, fax (910) 769-9435

Email: customers@mtc-usa.com

Website: www.mtc-usa.com