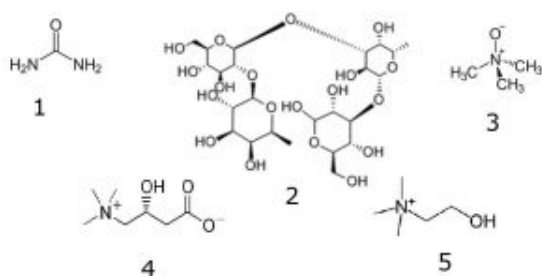
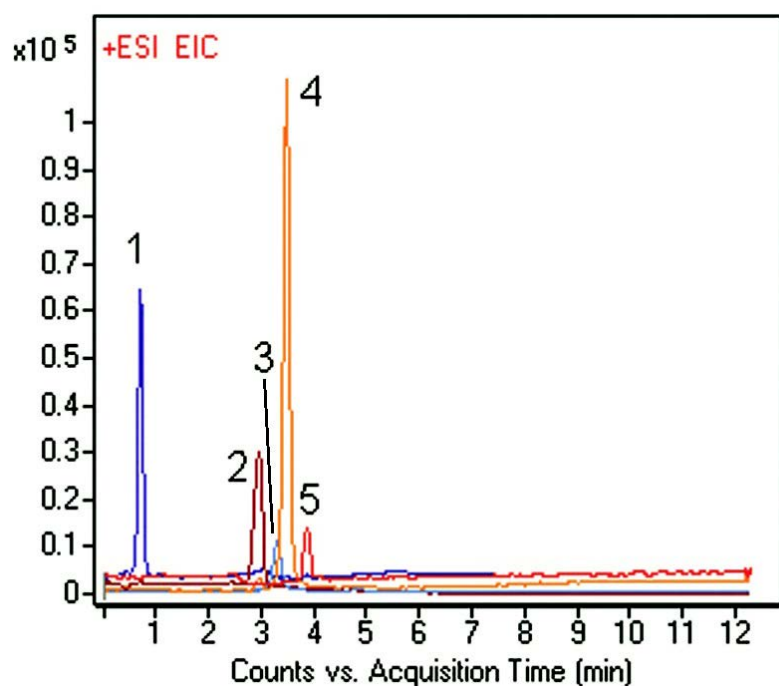


## Human Plasma Extract Analyzed by LCMS – AppNote

### Urea, Lactodifucotetraose, Trimethylamine, L-carnitine & Choline

Using this Method it is possible to analyze Compounds present in a Human Plasma Samples. The mechanism of retention of these polar compounds on the Column used is unknown at this time.

It is possible to Retain and Separate steroids and other Compounds based on the Shape of the Molecules.



#### Peaks:

1. Urea 61.0396 m/z [M + H]<sup>+</sup>
2. Lactodifucotetraose 635.2393 m/z [M + H]<sup>+</sup>
3. Trimethylamine N-oxide 76.0757 m/z [M + H]<sup>+</sup>
4. L-carnitine 162.1125 m/z [M + H]<sup>+</sup>
5. Choline 105.1148 m/z [M + H]<sup>+</sup>

Printed from the Chrom Resource Center

Copyright 2024, All Rights Apply

**MicroSolv Technology Corporation**

9158 Industrial Blvd. NE, Leland, NC 28451

tel. (732) 380-8900, fax (910) 769-9435

Email: customers@mtc-usa.com

Website: www.mtc-usa.com

### Method Conditions

**Column:** Cogent UDC Cholesterol™, 4μm, 100Å

**Catalog No.:** 69069-05P-2

**Dimensions:** 2.1 x 50mm

**Mobile Phase:**

A: DI Water / 0.1% Formic Acid (v/v)

B: Acetonitrile / 0.1% Formic Acid (v/v)

**Gradient:**

Time (minutes)	%B
0	90
1	90
7	20
11	20
12	90

**Post Time:** 3 minutes

**Flow rate:** 0.4 mL/minute

**Detection:** ESI - POS - Agilent 6210 MSD TOF Mass Spectrometer

**Injection vol.:** 1µL

**Sample Preparation:** Proprietary Lyophilized Plasma Sample was reconstituted in 60 µL 80% Acetonitrile / 20% DI Water mixture.



**Attachment**

**No 302 Plasma Extract Analyzed by LCMS pdf** 0.4 Mb [Download File](#)

Printed from the Chrom Resource Center

Copyright 2024, All Rights Apply

**MicroSolv Technology Corporation**

9158 Industrial Blvd. NE, Leland, NC 28451

tel. (732) 380-8900, fax (910) 769-9435

Email: [customers@mtc-usa.com](mailto:customers@mtc-usa.com)

Website: [www.mtc-usa.com](http://www.mtc-usa.com)