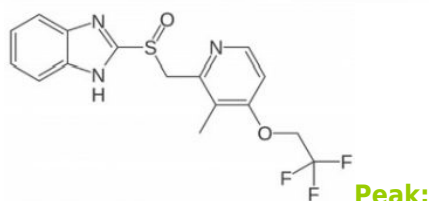
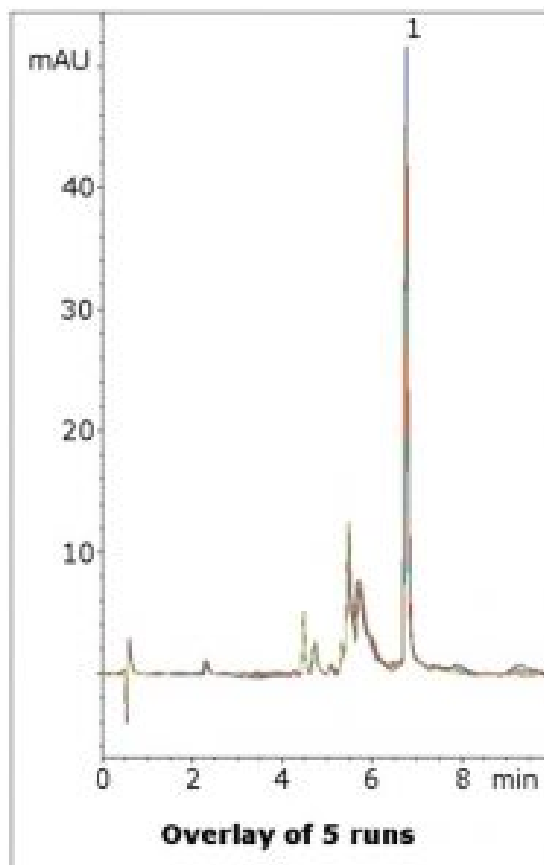


## Lansoprazole Capsule Analyzed with HPLC – AppNote

### Separation from matrix peaks

Lansoprazole is separated from several Matrix Components in this simple assay method. The Mobile Phase is LC-MS compatible so the method could be applied to more complex samples such as plasma. Five runs are shown in the figure to illustrate the repeatability of the data.



Lansoprazole

### Method Conditions

**Column:** Cogent Bidentate C18™, 2.2µm, 120Å

**Catalog No.:** 40218-05P-2

**Dimensions:** 2.1 x 50 mm

**Mobile Phase:**

A: DI Water / 0.1% Formic Acid (v/v)

B: Acetonitrile / 0.1% Formic Acid (v/v)

Printed from the Chrom Resource Center

Copyright 2024, All Rights Apply

**MicroSolv Technology Corporation**

9158 Industrial Blvd. NE, Leland, NC 28451

tel. (732) 380-8900, fax (910) 769-9435

Email: customers@mtc-usa.com

Website: www.mtc-usa.com

## Gradient:

T  
i  
m  
e  
(  
m  
i  
n  
u  
t  
e  
s  
)  
1  
0  
7  
6  
1  
0

**Injection vol.:** 0.2 µL

**Flow rate:** 0.4mL / minute

**Detection:** UV @ 285 nm

**Sample Preparation:** 15mg strength Lansoprazole capsule contents were ground and added to a 25mL volumetric flask. A portion of 50/50 Solvent A / Solvent B was added and the flask was sonicated 10 minutes. Then it was diluted to mark and mixed. A portion was filtered through a 0.45µm Nylon Syringe Filter (MicroSolv Tech Corp.).

**t<sub>0</sub>:** 0.5 minutes

**Note:** *Lansoprazole is a proton-pump inhibitor used for acid reducing effects. It is available over-the-counter by Novartis under the trade name Prevacid, as well as generic versions.*



## Attachment

**No 273 Lansoprazole Capsule Analyzed by HPLC pdf** 0.3 Mb [Download File](#)

Printed from the Chrom Resource Center

Copyright 2024, All Rights Apply

**MicroSolv Technology Corporation**

9158 Industrial Blvd. NE, Leland, NC 28451

tel. (732) 380-8900, fax (910) 769-9435

Email: [customers@mtc-usa.com](mailto:customers@mtc-usa.com)

Website: [www.mtc-usa.com](http://www.mtc-usa.com)