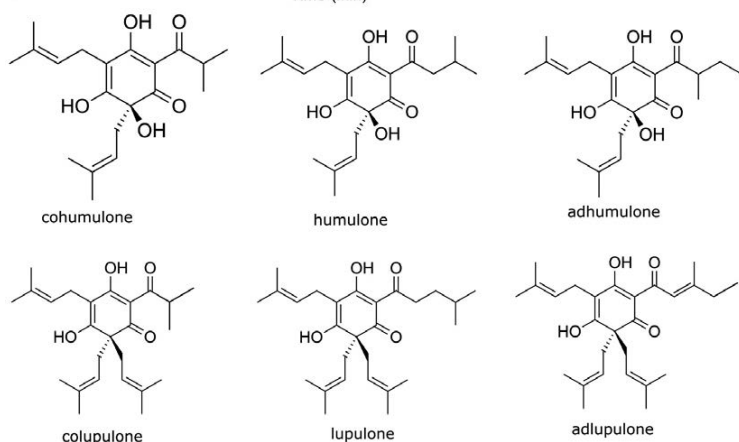
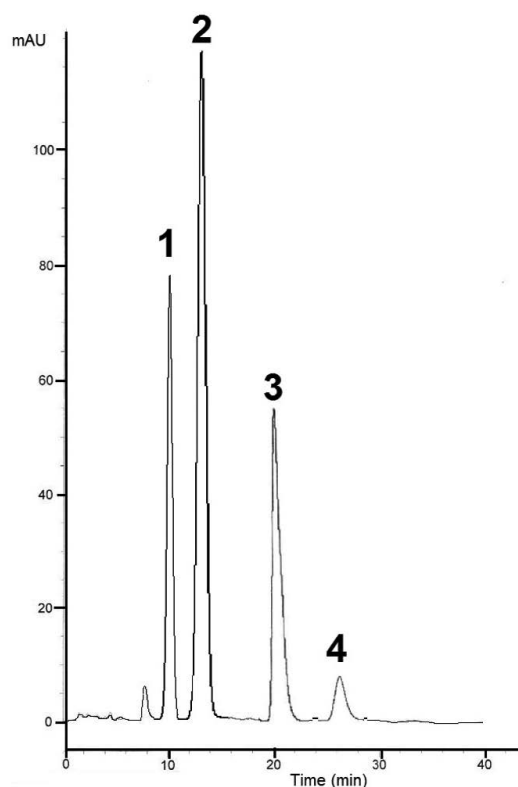


Analysis of Alpha and Beta-Acids in Hops with HPLC – AppNote

Robust, Precise Method for Beer Analysis with HPLC

The effectiveness of this Method is evident from the fact that data obtained were in a good agreement with the literature values. This Method also has the added bonus of good Precision ($\%RSD = 0.1$ and below).

Calibration Curves for Alpha and Beta Acids in Beer showed good linearity ($R^2 = 0.9999$).



Peaks:

1. Cohumulone
2. Humulone / Adhumulone

Printed from the Chrom Resource Center

Copyright 2024, All Rights Apply

MicroSolv Technology Corporation

9158 Industrial Blvd. NE, Leland, NC 28451

tel. (732) 380-8900, fax (910) 769-9435

Email: customers@mtc-usa.com

Website: www.mtc-usa.com

3. Colupulone

4. Lupulone / Adlupulone

Method Conditions

Column: Cogent Bidentate C18™, 4µm, 100Å

Catalog No.: 40018-75P

Dimensions: 4.6 x 75mm

Mobile Phase: 80:20 A: DI Water with 0.1% Formic Acid / B: Methanol

Injection vol.: 5µL

Flow rate: 0.5mL / minutes

Detection: UV @ 326nm

Sample Preparation:

International Calibration Extract 3 (ICE-3), containing 44.65% Alpha Acids (Cohumulone - 13.88%, Humulone / Adhumulone - 30.76%) and 24.26% beta acids (Colupulone - 13.44%, Lupulone / Adlupulone 10.84%), was obtained from the American Society of Brewing Chemists.

The sample was prepared by dissolving 0.1482g of ICE-3 standard in 50.00mL of the Mobile Phase. The solution was then filtered with a 0.45µm Nylon Syringe Filter (MicroSolv Tech Corp.).

Samples for calibration curves were prepared and diluted 1:20. Final concentrations were 0.005-0.05mg / mL.

t₀: 1.5 minutes

Note: Hops contain substances that are described as alpha and beta-acids, which are used to impart bitter flavor and aroma to beer. The bitterness of beer depends mainly on the concentration of alpha acids in the hops, so it is important to be able to determine their composition. In addition bittering acids found in beer may have positive effects on diabetes, forms of cancer, inflammation and weight loss, although this has not been proven yet.



Attachment

No 245 Analysis of Alpha and Beta-Acids in Hops with HPLC pdf 0.2 Mb [Download File](#)

Printed from the Chrom Resource Center

Copyright 2024, All Rights Apply

MicroSolv Technology Corporation

9158 Industrial Blvd. NE, Leland, NC 28451

tel. (732) 380-8900, fax (910) 769-9435

Email: customers@mtc-usa.com

Website: www.mtc-usa.com