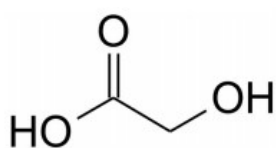
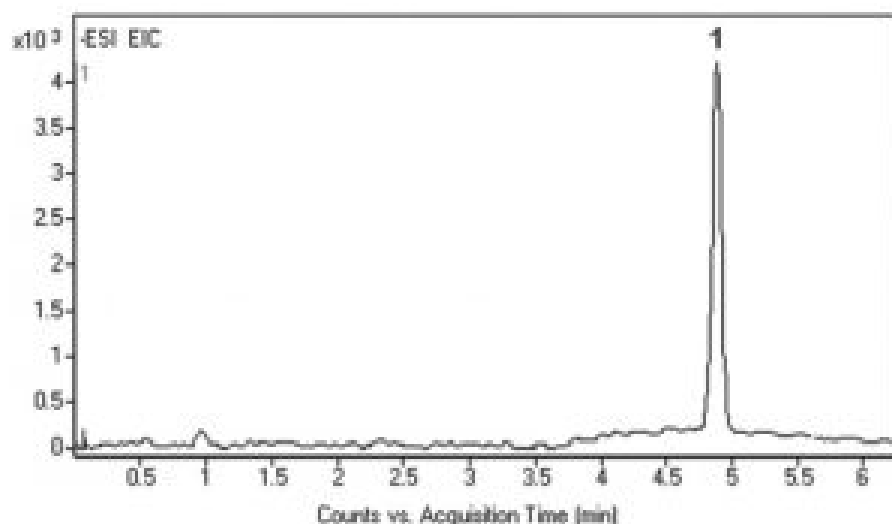


## Glycolic Acid Analyzed by HPLC – AppNote

### Analysis in Urine Samples

An enzymatic Method is widely used for the determinations of Glycolic Acid in various products, but it suffers from instability and very high cost of the enzyme (Glycolate Oxidase). The LCMS analysis presented here is rapid, simple, selective, and suitable for routine analyses of urine samples.

It offers numerous advantages including ease of sample preparation, low cost, rapidity, and excellent repeatability (*precision was better than 1.0% - %RSD below 0.5 for n=3*). The calibration curve was linear in the 0.080-0.30 mg / mL (GA). The correlation coefficients of linear regression analysis were with the range 0.9974-0.9997. Recoveries of the GA from urine samples were between 94.9 and 100.5%.



Peak:

Glycolic Acid 75.0088 [M-H]<sup>-</sup> m/z in urine sample

### Method Conditions

**Column:** Cogent Diamond Hydride™, 4µm, 100Å

**Catalog No.:** 70000-15P-2

**Dimensions:** 2.1 x 150mm

**Mobile Phase:**

A: DI Water / 10 mM Ammonium Formate

B: 95% Acetonitrile / 5% DI Water / 10 mM Ammonium Formate (v/v)

**Gradient:**

Time (minutes)	%B
0	95

Printed from the Chrom Resource Center

Copyright 2024, All Rights Apply

**MicroSolv Technology Corporation**

9158 Industrial Blvd. NE, Leland, NC 28451

tel. (732) 380-8900, fax (910) 769-9435

Email: customers@mtc-usa.com

Website: www.mtc-usa.com

1	95
5	30
7	30
8	95

**Post Time:** 3 minutes

**Flow rate:** 0.4mL / minute

**Detection:** ESI - NEG - Agilent 6210 MSD TOF Mass Spectrometer

**Sample Preparation:** Urine sample was spiked with stock solution of Glycolic Acid. The solution was filtered through a disposable 0.45µm Syringe Filter (MicroSolv Tech Corp.). The sample for injection was diluted 1:100 with 50:50 Solvent A / Solvent B mixture for a final concentration of 0.1mg / mL.

**t<sub>0</sub>:** 0.9 minutes

**Note:** Glycolic Acid is widely used in adhesives, metal cleaning, dairy cleaning, water-well cleaning, electroplating, dyeing, detergents and cosmetic products. It is also the most commonly used hydrophilic teeth whitening agent.



## Attachment

No 220 Glycolic Acid Analyzed by HPLC pdf 0.2 Mb [Download File](#)

Printed from the Chrom Resource Center

Copyright 2024, All Rights Apply

**MicroSolv Technology Corporation**

9158 Industrial Blvd. NE, Leland, NC 28451

tel. (732) 380-8900, fax (910) 769-9435

Email: [customers@mtc-usa.com](mailto:customers@mtc-usa.com)

Website: [www.mtc-usa.com](http://www.mtc-usa.com)