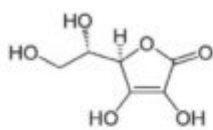
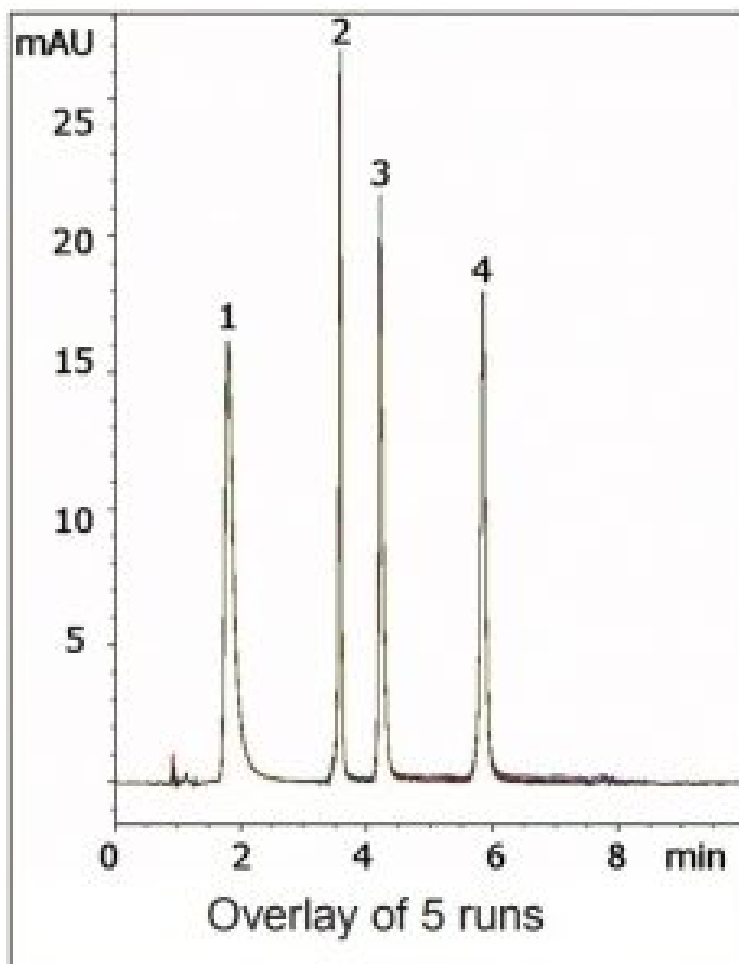

pH Gradient to Separate Vitamins - AppNote

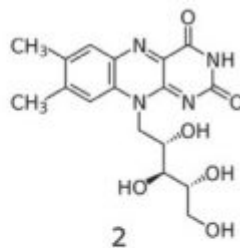
Separation of Ascorbic Acid, Riboflavin, Pyridoxine, & Thiamine

This LCMS compatible Method shows excellent Separation and Retention for all four analytes. If the analysis were done by Reversed Phase, LCMS incompatible ion pair agents would likely be required to get this type of separation.

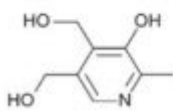
Ascorbic Acid was found to have better Retention near neutral pH but Thiamine was retained too strongly under these conditions. Therefore a pH gradient was used in which the acidity of the Mobile Phase increases as well as the Water content. The Method is reliable and Robust with respect to analyte Retention and Peak shape, as the overlay of five consecutive runs in the Figure demonstrates.



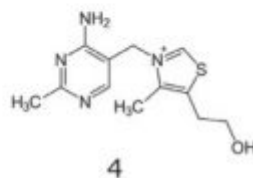
1



2



3



4

Peaks:

1. Ascorbic Acid
2. Riboflavin
3. Pyridoxine
4. Thiamine

Method Conditions

Column: Cogent Diamond Hydride™, 4µm, 100Å

Catalog No.: 70000-7.5P

Dimensions: 4.6 x 75mm

Mobile Phase:

A: DI Water / 10mM Ammonium Formate / 0.05% Formic Acid (pH 3.5)

B: 95% Acetonitrile / 5% 10mM Ammonium Formate (pH 6.5)

Gradient:

Time (minutes)	%B
0	100
1.5	100
4	30
6	30
7	100

Post Time: 3 minutes

Injection vol.: 1µL

Flow rate: 1.0mL / minute

Detection: UV @ 266nm

Sample Preparation: Mix of 300mg / L Ascorbic Acid, 5mg / L Riboflavin, 100mg / L Pyridoxine, 20mg / L Thiamine in 50% 10mM Ammonium Formate / 50% Acetonitrile diluent. Solution was filtered through 0.45µm Nylon Syringe Filter (MicroSolv Tech Corp.). Peak identities were confirmed by individual standards.

t₀: 0.9 minutes

Note: The word “vitamin” was originally spelled “vitamine” when it was first coined by biochemist Casimir Funk. It was derived from the words “vital” and “amine” because it was believed at the time that all vitamins were chemical amines. The “e” was dropped from the word when it was discovered that this is not the case.



Attachment

No 164 pH Gradient to Separate Vitamins pdf 0.6 Mb [Download File](#)