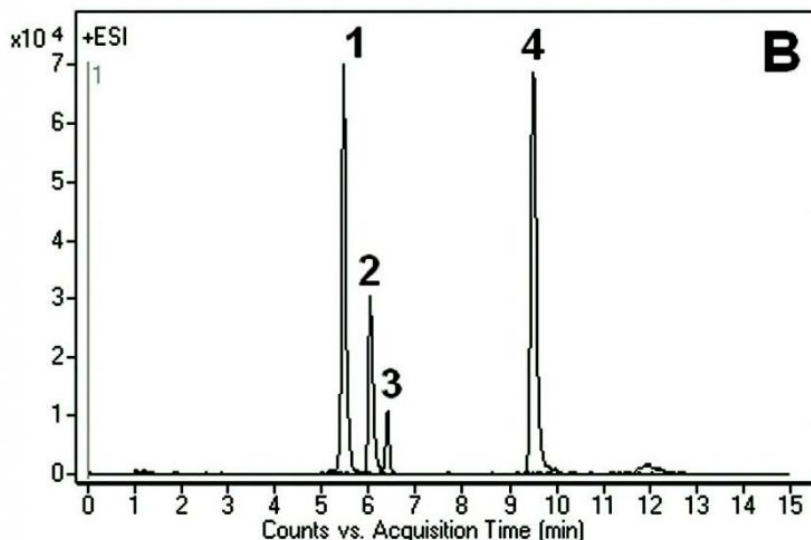
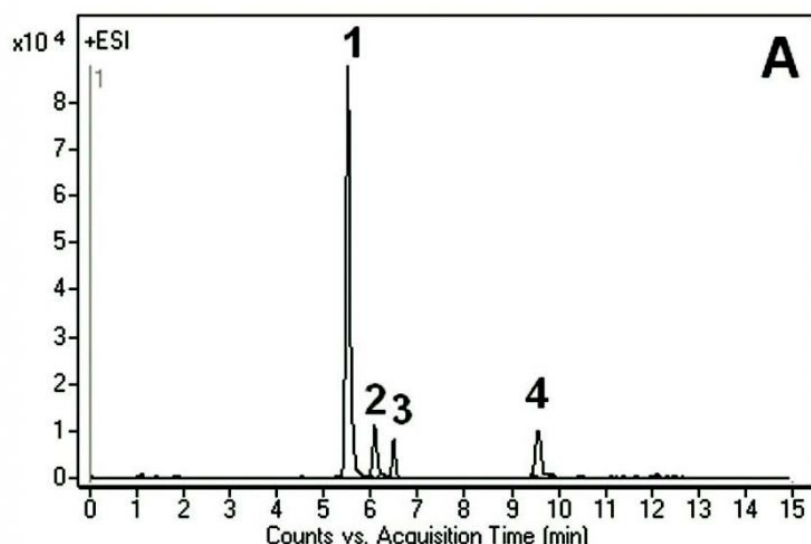


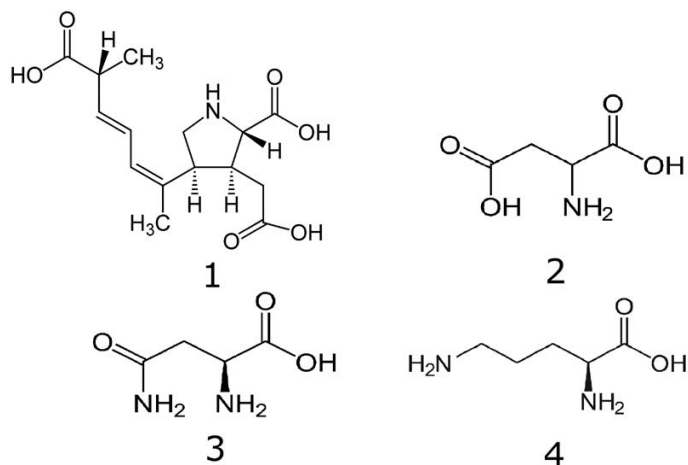
## Domoic Acid, Amino Acids, & Ornithine Analyzed with LCMS – AppNote

### LC-MS Analysis without Analyte Derivatization

The potent toxin, Domoic Acid is a highly polar compound which is poorly retained on most Reversed Phase Columns. In this Method, not only was Domoic Acid well Retained but also two isobaric compounds (L-Asparagine and Ornithine) were Retained and Separated. In addition, the Peak obtained for Aspartic Acid was very Symmetrical. From these chromatograms, it is clear that the two cell extracts show differences in the ratios between the analyzed compounds (Figure A vs. B).

The presented Method can be used in studies of cell extracts. In addition, it is Robust and Reproducible. The Column in this Method requires a very short Equilibration time between Gradient runs and the Method does not require pre-Column derivatization of any of the analytes.





## Peaks:

1. Domoic Acid 312.1442 m/z (M+H)<sup>+</sup>
2. L-aspartic Acid 134.0453 m/z (M+H)<sup>+</sup>
3. L-asparagine 133.0608 m/z (M+H)<sup>+</sup>
4. Ornithine 133.0972 m/z (M+H)<sup>+</sup>

## Method Conditions

**Column:** Cogent Diamond Hydride™, 4μm, 100Å

**Catalog No.:** 70000-15P-2

**Dimensions:** 2.1 x 150mm

**Mobile Phase:**

A: 50% DI Water / 50% Methanol / 0.1% Formic Acid

B: Acetonitrile / 0.1% Formic Acid

**Gradient:**

Time (minutes)	%B
0	95
7	20
10	20
11	95

**Post Time:** 5 minutes

**Injection vol.:** 1μL

**Flow rate:** 0.4mL / minute

**Detection:** ESI - POS - Agilent 6210 MSD TOF Mass Spectrometer

**Sample Preparation:** Methanolic extracts of proprietary cell cultures A and B, isolated by filtration.

**t<sub>0</sub>:** 0.9 minutes

**Note:** Domoic Acid, a compound known for some 30 years, was found to have neurological effects when ingested by humans. Upon ingestion, it causes diarrhea, dizziness, seizures, permanent loss of short-term memory and sometimes death.



**Attachment**

**No 153 Domoic Acid, Amino Acids, & Ornithine Analyzed with LCMS pdf** 0.4 Mb [Download File](#)

Printed from the Chrom Resource Center

**MicroSolv Technology Corporation**

9158 Industrial Blvd. NE, Leland, NC 28451

tel. (732) 380-8900, fax (910) 769-9435

Email: [customers@mtc-usa.com](mailto:customers@mtc-usa.com)

Website: [www.mtc-usa.com](http://www.mtc-usa.com)

Date: 05-07-2024