

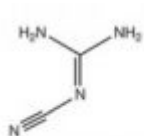
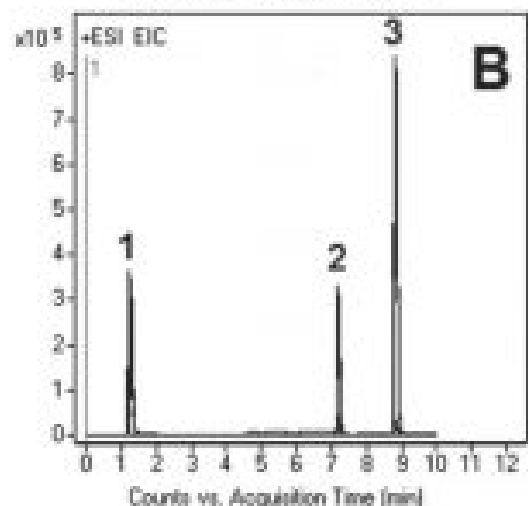
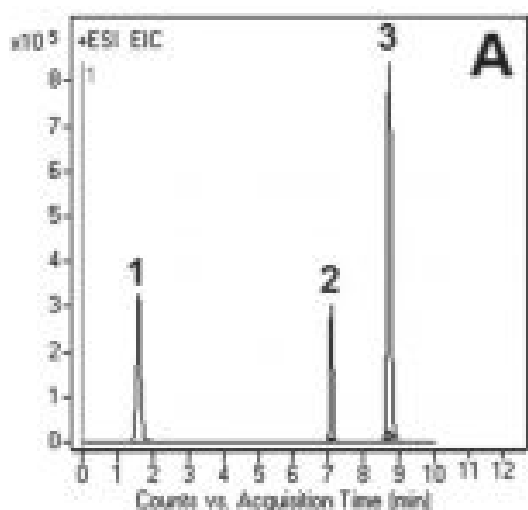
Impurities Determination in Metformin HCL Formulation – AppNote

Simple Separation of API from Melamine and Cyanoguanidine

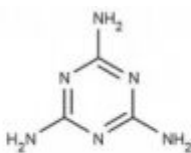
A simple Method was developed for the analysis of the widely prescribed anti-diabetic drug Metformin Hydrochloride and for determination of two impurities, Cyanoguanidine and Melamine, in tablet formulations.

In addition, to Accurate Mass all three compounds, the Peaks were confirmed by injections of standards. The USP specified impurity limits are not more than 0.02% and 0.01% for Cyanoguanidine and Melamine respectively.

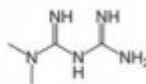
The precision of this Method was evaluated by calculating %RSD of the Peak areas of five injections (*see Figure B*). The obtained value was 0.2%.



1. Cyanoguanidine



2. Melamine



3. Metformin

Peaks:

1. Cyanoguanidine 85.0509 m/z (M+H)+
2. Melamine 127.0727 m/z (M+H)+
3. Metformin 130.1087 m/z (M+H)+

Method Conditions

Column: Cogent Diamond Hydride™, 4µm, 100Å

Catalog No.: 70000-15P-2

Dimensions: 2.1 x 150mm

Mobile Phase:

A: 50% Isopropanol / 50% DI Water / 0.1% Acetic Acid

B: Acetonitrile / 0.1% Acetic Acid

Gradient:

Time (minutes)	%B
0	100
2	100
5	20
9	20
10	100

Post Time: 5 minutes

Injection vol.: 1µL

Flow rate: 0.4mL / minute

Detection: ESI - POS - Agilent 6210 MSD TOF Mass Spectrometer

Note: *k'* of Cyanoguanidine for this Method was found to be over twice that of some Reversed Phase Methods studies that used ordinary Cyano Columns and an isocratic Mobile Phase 95% DI Water / 5% Acetonitrile. A variety of Mobile Phase additives were investigated, including 0.1% Formic Acid, 0.1% Trifluoroacetic Acid (TFA), 0.1% Trifluoroacetic Acid (TFA) +1g / L Sodium Octyl Sulfate, and 10mM Ammonium Acetate. The Reversed Phase Methods did not produce *k'* > 0.3.



Attachment

No 146 Impurities Determination in Metformin HCL Formulation pdf 0.3 Mb [Download File](#)

Printed from the Chrom Resource Center

MicroSolv Technology Corporation

9158 Industrial Blvd. NE, Leland, NC 28451

tel. (732) 380-8900, fax (910) 769-9435

Email: customers@mtc-usa.com

Website: www.mtc-usa.com

Date: 03-05-2024