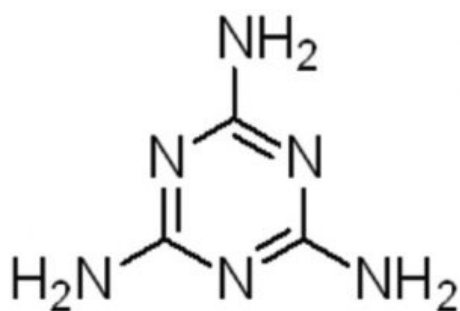
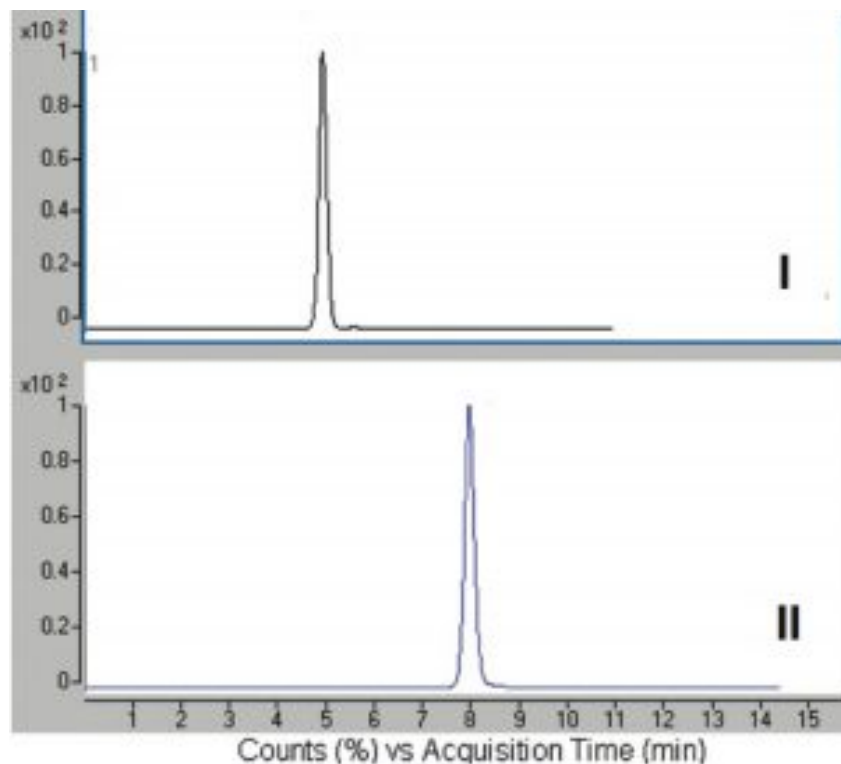


Melamine Analyzed with LCMS – AppNote

Detect Trace Levels of Melamine

The unique chemical properties of Melamine (base functionalities) present challenges in obtaining Retention and adequate Sensitivity, when using standard HPLC Columns. In this Method, Melamine is Analyzed under Aqueous Normal Phase (ANP) conditions with an increased Sensitivity making it possible for detection at Trace Levels.



Peak:

Melamine m/z 127 (M+H)⁺

Method Conditions

Column: Cogent Diamond Hydride™, 4 μ m, 100Å

Catalog No.: 70000-15P-2

Dimensions: 2.1 x 150mm

Mobile Phase:

Printed from the Chrom Resource Center

Copyright 2024, All Rights Apply

MicroSolv Technology Corporation

9158 Industrial Blvd. NE, Leland, NC 28451

tel. (732) 380-8900, fax (910) 769-9435

Email: customers@mtc-usa.com

Website: www.mtc-usa.com

I: 60% acetonitrile / 40% DI water / 0.1% formic acid

II: 70% acetonitrile / 30% DI water / 0.1% formic acid

Flow rate: 0.4mL / minute

Detection: ESI - pos - Agilent 6210 MSD TOF Mass Spectrometer

Sample Preparation: 166.7µg / mL of compound in 50% Acetonitrile / DI Water / 0.1% Acetic Acid. Run 1:1000 dilution in 80% Acetonitrile / DI Water / 0.1% Acetic Acid

t₀: 1.44 minute

Notes: *Several dogs and cats died or were seriously ill after consumption of pet foods which had been manufactured with adulterated wheat gluteins. After testing of the wheat gluteins it was determined that they contained significant levels of Melamine and / or several related compounds.*



Attachment

No 50 Melamine Analyzed with LCMS pdf 0.2 Mb [Download File](#)

Printed from the Chrom Resource Center

Copyright 2024, All Rights Apply

MicroSolv Technology Corporation

9158 Industrial Blvd. NE, Leland, NC 28451

tel. (732) 380-8900, fax (910) 769-9435

Email: customers@mtc-usa.com

Website: www.mtc-usa.com